



2022

**Electric 4X4
Vehicles**

**Owner's Manual
All Electric Models**

Warranty information appears at the end of this manual. No other warranties, expressed or implied, are contained herein. Your authorized representative checked the vehicle before it was delivered to you and will provide you a copy of the completed vehicle warranty registration form.

HuntVe is not liable for errors in this manual or for incidental or consequential damages that result from the use of the material in this manual.

This manual contains proprietary information that is protected by copyright. All rights are reserved. No part of this manual may be photocopied, reproduced, or translated to another language without the written consent of Martex Global Enterprise L.L.C.

The information contained in this document is subject to change without notice.

Martex Global Enterprise L.L.C. reserves the right to make design changes to vehicles without obligation to make these changes on units previously sold.

These vehicles do not conform to Federal Motor Vehicle Safety Standards for automobiles or to FMVSS 500 for low-speed vehicles, and are not equipped for operation on public streets, roads, or highways.

HuntVe, registered trademarks of Martex Global Enterprises L.L.C.
This manual effective August 2019.

FOREWORD

Thank you for choosing HuntVe, the industry leader in vehicle efficiency and long-lasting value. You have chosen the finest vehicle on the market. Please protect your investment and ensure that your HuntVe vehicle(s) provides years of reliable, superior performance by reading and following the maintenance instructions in this manual.

Your comfort and safety are important to us, so we urge you to read and follow the step-by-step operating instructions and safety procedures in this manual. These instructions must be followed in order to avoid the risk of severe personal injury. If you rent or loan your vehicle to others, we recommend that you ask them to read this manual before they operate the vehicle.

HuntVe products are backed by a customer support system designed to offer you fast, courteous service. In the event that your HuntVe vehicle needs repairs or service, we recommend that your local authorized HuntVe representative perform them. For the name and address of the HuntVe representative nearest you, logon to our web site at www.HuntVe.com or call 1.888.554.5953. Your local authorized HuntVe representative can also provide technical advice, parts, and service manuals.

We hope you will consider this owner's manual a permanent part of your HuntVe vehicle. If you sell the vehicle, please include the manual so that the next owner will have the important operating, safety, and maintenance information it contains.

TABLE OF CONTENTS

| | |
|--|----|
| Safety Information..... | 5 |
| Practice Safety | 6 |
| Proposition 65 – State of California | 6 |
| Safety Details | 7 |
| General Warnings | 8 |
| General Information | 9 |
| Model Identification | 10 |
| Controls and Indicators | 10 |
| Pre-Operation and Daily Safety Checklist | 14 |
| Performance Inspection | 15 |
| Driving Instructions | 16 |
| Loading and Unloading – Box Bed Vehicles | 18 |
| Towing the Vehicle | 19 |
| Transporting on a Trailer | 20 |
| Storage | 20 |
| Maintenance | 22 |
| Periodic Service Schedule | 23 |
| Periodic Lubrication Schedule | 24 |
| Vehicle Controller | 25 |
| Batteries | 25 |
| Battery Charger | 28 |
| Cleaning the Vehicle..... | 32 |
| Accessories | 32 |
| Subsequent Owner Registration | 32 |
| Specifications – HuntVe | 33 |
| Warranty | 34 |

SAFETY INFORMATION

The following pages contain safety feature identification information. For detailed information on specific features, read the appropriate section in this manual.

PRACTICE SAFETY

Safety signs like you see above may at first seem shocking, but their impact is mild compared with the reality of severe personal injury.

Your safety and satisfaction are of the utmost importance to us. That is why before operating the vehicle, we urge you to review the information in this manual. Understand and become familiar with the DANGER, WARNING, and CAUTION statements and procedures it contains, along with the safety decals that are affixed to your vehicle. Take time to understand the language of safety. It is a language that can save your life.

PROPOSITION 65 – STATE OF CALIFORNIA

WARNING

- **This product contains or emits chemicals or substances that have been determined by the state of California to cause cancer and birth defects or other reproductive harm.**

SAFETY DETAILS

WARNING

- **This owner's manual should be read completely before attempting to drive or service the vehicle. Failure to follow the instructions in this manual could result in property damage, severe personal injury, or death.**

It is important to note that some vital statements throughout this manual and on the decals affixed to the vehicle are preceded by the words DANGER, WARNING, or CAUTION. For your protection, we recommend that you take special notice of these safety precautions. Safety precautions are essential and must be followed.

Throughout this manual the word "vehicle" is used in reference to any vehicles covered in this manual, or may be used when referring to all vehicles.

If any of the operation or safety decals on the vehicle become damaged, have been removed or cannot be easily read, they should be replaced immediately to avoid possible property damage, personal injury, or death. Contact your dealer.

DANGER

- **A DANGER indicates an immediate hazard that will result in severe personal injury or death.**

WARNING

- **A WARNING indicates an immediate hazard that could result in severe personal injury or death.**

CAUTION

- **A CAUTION with the safety alert symbol indicates a hazard or unsafe practice that could result in minor personal injury.**

CAUTION

- **A CAUTION without the safety alert symbol indicates a potentially hazardous situation that could result in property damage.**

GENERAL WARNINGS

The following safety statements must be heeded whenever the vehicle is being operated, repaired, or serviced. Other specific safety statements appear throughout this manual and on the vehicle.

DANGER

Battery – Explosive gases! Do not smoke. Keep sparks and flames away from the vehicle and service area. Ventilate when charging or operating vehicle in an enclosed area. Wear a full face shield and rubber gloves when working on or near batteries.

The vehicle will not provide protection from lightning, flying objects, or other storm-related hazards. If caught in a storm while driving a HuntVe vehicle, exit the vehicle and seek shelter in accordance with applicable safety guidelines for your location.

WARNING

Follow the procedures exactly as stated in this manual, and heed all DANGER, WARNING, and CAUTION statements in this manual as well as those on the vehicle and battery charger.

Do not leave children unattended on vehicle.

Prior to leaving the vehicle unattended or servicing the vehicle, set the park brake, place the Forward/Reverse switch in the NEUTRAL position, turn

the key switch to the OFF position, and remove the key.

Chock the wheels when servicing the vehicle.

Improper use of the vehicle or failure to properly maintain it could result in decreased vehicle performance, severe personal injury, or death.

Any modification or change to the vehicle that affects the stability or handling of the vehicle, or increases maximum vehicle speed beyond factory specifications, could result in severe personal injury or death.

Check the vehicle for proper location of all vehicle safety and operation decals and make sure they are in place and are easy to read.

Only trained technicians should service or repair the vehicle or battery charger.

Anyone doing even simple repairs or service should have knowledge and experience in electrical and mechanical repair.

The appropriate instructions must be used when performing maintenance, service, or accessory installation.

GENERAL INFORMATION

HuntVe vehicles:

- Place Tow/Run switch under the front hood in the TOW position before disconnecting or connecting the batteries. Failure to heed this warning could result in a battery explosion or severe personal injury.

All electric vehicles:

- To avoid unintentionally starting the vehicle, disconnect the batteries as shown.

HuntVe vehicles:

- After disconnecting the batteries, wait 90 seconds for the controller capacitors to discharge.

All electric vehicles:

Wear safety glasses or approved eye protection when servicing the vehicle or battery charger. Wear a full face shield and rubber gloves when working on or near batteries.

Do not wear loose clothing or jewelry such as rings, watches, chains, etc., when servicing the vehicle or battery charger.

Use insulated tools when working near batteries or electrical connections.

Use extreme caution to avoid shorting of components or wiring.

MODEL IDENTIFICATION

Switchback Model - The serial number of the vehicle is printed on a decal mounted on the frame rail just above the passenger side tire. (Example: 1HLD42B7BF861001)

Switchback Crew Model - The serial number of the vehicle is printed on a decal mounted under the front seat on the driver's side (Example: 1HLD42B7BF861001).

This decal can be on the body under the driver's side.

See following NOTE.

NOTE: Have the vehicle serial number available when ordering parts or making inquiries.

CONTROLS AND INDICATORS

See General Warnings on page 8.

WARNING

- If loaning the vehicle, make sure the driver is familiar with all controls and operating procedures before allowing the vehicle to be driven.
- Any modification or change to the vehicle that affects the stability or handling of the vehicle, or increases maximum vehicle speed beyond factory specifications, could result in severe personal injury or death.
- Do not shift the Forward/Reverse switch while the vehicle is moving. To avoid injury to an unsuspecting passenger or damage to the vehicle, always bring the vehicle to a full stop before shifting the Forward/Reverse handle or switch.
- Release the accelerator pedal and then press the brake pedal firmly until the vehicle stops. To avoid unintentionally starting or rolling the vehicle, set the park brake, place the Forward/ Reverse handle or switch in the NEUTRAL position, turn the key switch to the OFF position, and remove the key when leaving the vehicle.

Figure 4 Key Switch

KEY SWITCH

The key switch is mounted on the dash to the right of the steering column. It has two positions, OFF to the left and ON to the right.

NOTE: *The key can be removed only when the key switch is in the OFF position.*

HuntVe Vehicles

The Forward/Reverse rocker switch is located on the dash assembly upper left position. See The FORWARD and REVERSE positions are clearly marked. Push up for the FORWARD side of the switch to operate the vehicle in the forward direction or push down the REVERSE side of the switch to operate the vehicle in reverse. When the rocker switch is positioned in NEUTRAL, with neither side down, the vehicle will not operate if the accelerator pedal is pressed (**Figure 5**).

ACCELERATOR PEDAL

The accelerator pedal is the pedal on the right, it is adjustable for height and width. The operation of the accelerator pedal differs from that of an automobile. When the key switch is in the ON position, and the Forward/Reverse switch is in either the FORWARD or REVERSE position, pressing the accelerator pedal will start the vehicle moving in the direction selected (forward or reverse). As the accelerator pedal is pressed, speed will increase until full speed is reached. When the accelerator is released, power will be cut off and the motor will stop running.

BRAKE PEDAL

The brake pedal is the large pedal on the left.

PARK BRAKE HANDLE

The park brake pedal is located below the dash on the left side with the brake logo molded into it. To set the park brake, press the E brake pedal firmly and to release Push E brake pedal. To release pull on the park brake push button and turn. **See the following WARNING.**

WARNING

- **The park brake may not hold on an incline more than 20%. You will need to chock the tires to prevent the vehicle from rolling.**

TOW/RUN SWITCH

HuntVe Vehicles

WARNING

- **Place Tow/Run switch under the hood in the TOW position before disconnecting or connecting the batteries. Failure to heed this warning could result in a battery explosion or severe personal injury.**
- **When the Tow/Run switch is in the TOW position, all motor braking functions, including zero speed detect, are disabled.**

HuntVe vehicles are equipped with a Tow/Run switch. The switch must be in the RUN position in order to operate the vehicle. When the switch is in the TOW position, power to the vehicle electrical components is turned off and the vehicle will not operate. **See following NOTE.**

NOTE: After placing the Tow/Run switch in the TOW position, allow 10 seconds to elapse before switching back to the RUN position.

After placing the Tow/Run switch in the RUN position, allow 10 seconds to elapse before operating the vehicle.

The Tow/Run switch should be placed in the TOW position under the following conditions:

- **Before Towing the Vehicle:** Place the Tow/Run switch in the TOW position to disable all motor braking functions, thus preventing possible damage that could occur to the vehicle or electrical components if the vehicle is towed while the zero speed detect motor braking function is operating.
- **Before Disconnecting or Connecting Battery Cables:** Place the Tow/Run switch in the TOW position to turn off power to the vehicle electrical system, thus preventing severe arcing and possible battery explosion as the battery cables are disconnected.
- **For Long-Term Storage:** Place the Tow/Run switch in the TOW position to turn off power to the vehicle electrical system, thus preventing vehicle electrical components from discharging the batteries.

PRE-OPERATION AND DAILY SAFETY CHECKLIST

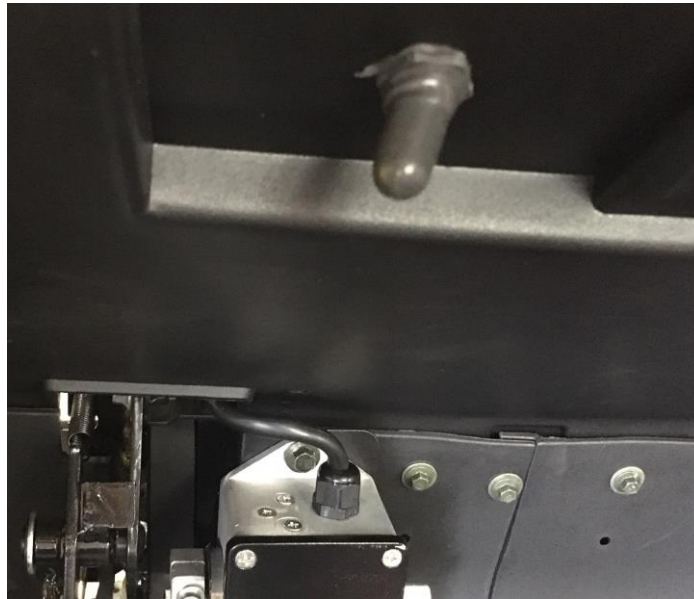
Each HuntVe vehicle has been thoroughly inspected and adjusted at the factory; however, upon receiving your new vehicle(s), you should become familiar with its controls, indicators, and operation. Carefully inspect each vehicle to ensure that it is in proper working condition before accepting delivery.

Use the following checklist as a guide to inspect the vehicle. This checklist should be used daily to ensure that the vehicle is in proper working condition and in conjunction with the Periodic Service Schedule on page 24. Any problems should be corrected by a HuntVe dealer or a trained technician.

- **General:** All the parts should be in place and properly installed. Be sure that all nuts, bolts, and screws are tight.
- **Tires:** Check for proper tire pressure. Visually inspect tires for wear, damage, and proper inflation on a daily basis. **See Specifications – on page 33.**
- **Batteries:** Check electrolyte to ensure that it is at the proper level (**Figure 14, Page 26**). Check battery posts. Wires should be tight and free of corrosion. On electric vehicles, charge batteries fully before first use of vehicle.
- **Charger cord, plug, and receptacle:** Visually inspect for cracks, loose connections, and frayed wiring. **See Plug and Receptacle on page 28.**

OFF

ON



TOW SWITCH LOCATION

PERFORMANCE INSPECTION

After you have familiarized yourself with the vehicle controls and have read and understood the driving instructions, take the vehicle for a test drive.

Use the following checklist as a guide to inspect the vehicle and check daily for proper operation. Any problems should be corrected by a HuntVe dealer or a trained technician.

All Vehicles

- **Forward/Reverse control:** Check for proper operation. **See Controls and Indicators on page 11.**
- **Brakes:** Be sure the brakes function properly. When brake pedal is fully pressed under moderate pressure, it should not go more than halfway to the floor, and vehicle should come to a smooth, straight stop. If the pedal goes more than halfway to the floor, or if the vehicle swerves or fails to stop, have the brake system checked and adjusted as required. Brake adjustment must be maintained so that the brake pedal cannot be pressed to the floor under any circumstance.
- **Park brake:** When latched, the park brake should lock the wheels and hold the vehicle stationary (on an incline of 20% or less). It should release when either the accelerator or brake pedal is pressed.
- **Steering:** The vehicle should be easy to steer and should not have any play in the steering wheel.
- **Accelerator:** With the key switch in the ON position and the Forward/Reverse switch in the FORWARD position, as the accelerator pedal is pressed, the motor should start, and the vehicle should come up smoothly to full speed. When the pedal is released, it should return to the original position and the motor should rotate freely. All HuntVe vehicles operate at reduced speed in reverse.
- When the pedal is released, it should return to the original position and the motor should rotate freely or go into motor braking mode. **See Pedal Up Motor Braking below.**
- **General:** Listen for any unusual noises such as squeaks or rattles. Check the vehicle's ride and performance. Have a HuntVe dealer or a trained technician investigate anything unusual.

WARNING

- **Do not operate vehicle on slopes exceeding 40% grades.**
- **Pedal Up Motor Braking (adjustable on HuntVe vehicles):** Accelerate the vehicle to full speed and then release the accelerator pedal. Motor braking should quickly and smoothly slow the vehicle to a stop. This feature is adjustable for HuntVe vehicles only. Contact your local HuntVe dealer/distributor to inquire about this adjustable feature.
- **Pedal Down Driving:** Accelerate down an incline with the accelerator pedal pressed. On very steep grades, the vehicle may slightly exceed its maximum designed speed, requiring use of the brake pedal.

DRIVING INSTRUCTIONS

WARNING

- Only licensed drivers should be allowed to drive the vehicle.
- If loaning the vehicle, make sure the driver is familiar with all controls and operating procedures before allowing the vehicle to be driven.
- No more than two people should be on the vehicle at one time, except for the 4-passenger vehicle, which can carry four people.
- The vehicle is not specially equipped for handicapped persons: -Be sure all persons can properly operate the vehicle prior to allowing them to drive the vehicle. Be sure all passengers are capable of securing themselves in a vehicle before allowing them to ride in one.

WARNING

- For night use, the vehicle must be equipped with headlights, taillights and reflectors.
- Stop the vehicle before shifting the Forward/Reverse handle. Failure to do so may result in injury to an unsuspecting passenger and (or) damage to the vehicle.
- To help avoid being struck, do not stand in front of or behind the vehicle.
- Operate the vehicle from the driver seat only.
- To help prevent falls from the vehicle, remain seated in a moving vehicle and hold on to hand holds or handrails at all times. Driver should keep both hands on the steering wheel when the vehicle is in motion.
- To help prevent the possibility of serious injury, keep your entire body inside the vehicle.
- Do not leave children unattended on vehicle.
- To help prevent overturning the vehicle, drive slowly straight up and down slopes. Avoid driving the vehicle on slopes exceeding 40% incline.
- To help avoid possible injury to an inattentive passenger and (or) damage to the vehicle, avoid sudden starts, sudden stops, and abrupt turns.
- To help avoid the possibility of losing control of or overturning the vehicle, reduce speed for adverse driving conditions such as wet grass or rough terrain.
- Do not use the vehicle on public roads. It is not designed or intended for street use and should not be licensed for use on public roads.
- Where applicable, obey all local rules concerning off-road vehicles.
- The vehicle should be driven in only specified areas by trained drivers.
- Do not drive while under the influence of alcohol, drugs, or medications.
- To prevent overturning the vehicle, drive slowly in turns.
- Use brakes to reduce speed when coasting downhill.

No one should drive the vehicle without first being instructed in the proper operation and use of the vehicle's controls. An experienced operator should accompany each first-time driver on a test drive before allowing him/her to operate the vehicle alone.

To ensure safe operation of the vehicle, follow exactly and in order, all of the following procedures. Read and understand all instructions prior to driving the vehicle.

Starting the vehicle

1. Study and understand controls.
2. Read safety warnings located on dash and above pedals.
3. For vehicles with cargo beds: Make sure load is secure.
4. Make sure everyone is seated and holding onto seat hand holds or handrails.
5. Make sure wheels are turned in desired direction and that nothing is in your path.
6. Turn key to the ON position.
7. Select direction by placing the Forward/Reverse handle or switch in desired position (F = forward or R = reverse).
8. Place both hands on the steering wheel.
9. Slowly press accelerator pedal. The park brake will release automatically and the vehicle will start to move. As the accelerator pedal is pressed, speed will increase until full speed is reached. **See following WARNING and NOTE.**

WARNING

- Operator must control vehicle speed when going downhill.
- HuntVe vehicles: “Pedal down” or “pedal up” motor braking may be used to help control speed when going downhill; however, steep terrain or other conditions may require that pedal braking be used in conjunction with motor braking.

STOPPING THE VEHICLE

WARNING

- Driving through water may affect the brakes. After driving through water, check effectiveness of the brakes by gently pressing the brake pedal. If the vehicle does not slow down at the normal rate, continue to press the brake pedal until the brakes dry out and normal performance returns.

CAUTION

- When stopped on a hill, use the brake pedal to hold your position. Do not use the accelerator pedal to hold position.

To stop the vehicle, release the accelerator pedal and press the brake pedal with your right foot until the vehicle comes to a complete stop.

PARKING AND LEAVING THE VEHICLE

1. After stopping the vehicle, firmly press the park brake pedal until it locks. This will prevent the vehicle from rolling.
2. Turn the key switch to the OFF position and place the Forward/Reverse handle or switch in the NEUTRAL position. Remove the key when the vehicle is not in use.
3. When the Tow/Run switch is in the RUN position, (with the Forward/Reverse switch or key switch in any position), the zero speed detect function will prevent the vehicle from rolling at more than 1 or 3 mph (1.5 or 4.8 km/h) unless the accelerator is pressed. This prevents the possibility of a parked vehicle (with the park brake disengaged) rolling away too fast to be overtaken on foot.

LOADING AND UNLOADING – BOX BED VEHICLES

WARNING

- Firmly engage the park brake before loading the vehicle.
- Do not allow riders in the cargo bed.
- Do not exceed the rated capacity of the vehicle. Rated capacity is for level surfaces only.

WARNING

- Overloading can affect vehicle handling or cause component failure, resulting in loss of control of vehicle and possible severe personal injury.
- Reduce speed and avoid sudden stops when backing up. Failure to do so may cause the vehicle to overturn or flip over backwards.
- Avoid stopping on a hill when loaded. If you must stop on a hill, avoid sudden starts, or rolling backwards and stopping suddenly. Failure to heed this warning may cause vehicle to overturn, possibly resulting in severe personal injury.
- Reduce vehicle load and speed when driving up or down slopes or on uneven terrain.
- Do not load the tailgate. The tailgate should be in the upright position and latched securely while the vehicle is in motion.
- To help avoid shifting the vehicle load and possibly overturning the vehicle, avoid sudden starts, sudden stops, and abrupt turns. Make sure cargo is well-secured.
- The cargo's center of gravity may affect the handling, steering, and braking of the vehicle. When the vehicle is loaded, reduce speed and drive slowly in turns.
- Avoid top-heavy loads. The center of gravity of a load should never exceed 15 inches (38 cm) above the bottom of the cargo bed.
- Unload cargo bed before raising vehicle with a lift, hoist, or jack.

When loading the vehicle, center and secure cargo as far forward as possible in the cargo bed. Do not overload the vehicle. **See the following chart for vehicle capacities.**

Maximum payload capacity 500 lb.
(cargo bed load plus gross trailer weight) (68 kg)

Maximum vehicle capacity 1200 lb.
(cargo bed load, passengers, plus gross trailer weight) (249.5 kg)

150 lb. force

Trailer tongue weight

TOWING WITH THE VEHICLE

WARNING

- Do not tow a vehicle or trailer on public streets or highways.
- Normal vehicle operating speed should be reduced when towing.
- Extreme caution should be used when towing.
- Total vehicle capacity, including the vehicle load rating and the gross weight of the vehicle or trailer being towed should not exceed the weight previously specified.

WARNING

- Do not allow riders in the vehicle or trailer being towed.
- Avoid sudden starts, sudden stops, and tight turns when towing.
- Avoid stopping on a hill when towing. If you must stop on a hill, avoid sudden starts or rolling backwards and stopping suddenly. Failure to heed this warning could cause vehicle to overturn, possibly resulting in severe personal injury.

Because towing a vehicle or trailer can have adverse effects on vehicle handling, be especially cautious when towing with a HuntVe vehicle. **See the preceding chart for vehicle capacities.**

Parking the vehicle with a trailer on a hill should be avoided. If you must park on a hill, apply the brakes and have someone chock the tires of the trailer. Brakes should be released to allow the chocks to absorb the load of the trailer. After the tires have been chocked, engage the park brake.

TOWING THE VEHICLE

WARNING

- Do not tow the vehicle on public streets or highways.
- Use only approved HuntVe tow bars.
- Turn the key switch to the OFF position and place the Forward/Reverse handle or switch in the NEUTRAL position before towing the vehicle.
- Extreme caution should be used when towing any vehicle.
- Do not exceed 5 mph (8 km/h) towing speed.
- Do not allow people in the vehicles being towed.
- Avoid sudden starts, sudden stops, and tight turns when towing.
- Avoid stopping on a hill when towing. If you must stop on a hill, avoid sudden starts or rolling backwards and stopping suddenly. Failure to heed this warning could cause the vehicle to overturn, possibly resulting in severe personal injury.
- Place the Tow/Run switch in TOW position; otherwise, the vehicle will not roll while being towed.

TRANSPORTING ON A TRAILER

WARNING

- For use on public roads, the trailer must meet all federal, state, and local requirements such as taillights, brake lights, etc.
- Do not tow a HuntVe vehicle behind a passenger vehicle or truck on a public road unless it is on an approved trailer.
- The vehicle to be towed should be tied securely to the trailer, with the Forward/Reverse handle or switch in the NEUTRAL position, the key switch in the OFF position, and the park brake firmly pressed and locked.
- Do not allow people in the trailer or vehicle being towed.
- Avoid sudden starts, sudden stops, and tight turns when towing.
- Avoid stopping on a hill when towing. If you must stop on a hill, avoid sudden starts or rolling backwards and stopping suddenly. Failure to heed this warning could cause the vehicle to overturn, possibly resulting in severe personal injury.
- When towing on a trailer, normal road speed of the tow vehicle should be reduced.
- Because of the added length of the trailer, use caution when making turns.
- Remove the vehicle windshield and secure the seat bottom before transporting on a trailer.

If the vehicle must be transported over long distances or on public highways, it should be transported on an approved trailer that has the approved load rating of 1200 lb. (544 kg) per vehicle being transported.

NOTE: A two-car trailer should be rated at $2 \times 1200 = 2400$ lb. ($2 \times 544 = 1088$ kg).

STORAGE

See General Warnings on page 8.

WARNING

- Turn the key switch to the OFF position, remove the key, and leave the Forward/Reverse switch in the NEUTRAL position during storage. Place Tow/Run switch in the TOW position. This is to prevent unintentionally starting the vehicle or a fire hazard.
- Do not attempt to charge frozen batteries or batteries with bulged cases. Discard the battery. Frozen batteries can explode.

CAUTION

- Batteries in a low state of charge will freeze at low temperatures.
- To avoid exposing electrical components to moisture and subsequent damage, do not use any type of pressure washing or steam cleaning equipment to wash the vehicle.

PREPARING THE ELECTRIC VEHICLE FOR EXTENDED STORAGE

1. Unload the vehicle so that the tires are supporting only the weight of the vehicle.

Maintenance

1. Fully charge batteries. **See Charging Batteries on page 28.**
2. Batteries should be clean and free of corrosion. Wash battery racks, tops and terminals of batteries with a solution of baking soda and water (1 cup (237 ml) baking soda per 1 gallon (3.8 L) of water). Rinse solution off batteries. Do not allow this solution to enter the batteries. Be sure terminals are tight. Let the terminals dry and then coat them with Battery Terminal Protector Spray.
3. Store vehicle in a cool, dry place. This will minimize battery self-discharge.
4. Adjust tires to recommended tire pressure. **See Specifications on page 33.**
5. Perform semiannual periodic lubrication. **See Periodic Lubrication Schedule on page 24.**
6. Thoroughly clean front body, rear body, seats, battery compartment, and underside of vehicle.
7. Do not engage the park brake. Chock the wheels to prevent the vehicle from rolling.
8. Keep batteries fully charged during storage.

- **Chargers:** Leave Charger plugged in during storage. The charger will automatically activate when necessary. If charger cannot remain plugged in, or AC power will not be available during extended storage, Turn the Tow Switch off and disconnect a battery cable.

CAUTION

- **Be sure to check the batteries and charger monthly to maintain correct battery water level and to ensure the charger is operating correctly during storage.**

RETURNING THE STORED ELECTRIC VEHICLE TO SERVICE

1. If necessary, with Tow Switch off connect batteries and tighten terminals to 110 in-lb (12.4 N·m).
2. Fully charge batteries.
3. Adjust tires to recommended tire pressure. **See Specifications –on page 33.**
4. Perform the Pre-Operation and Daily Safety Checklist on page 16 and the Performance Inspection on page 16.

MAINTENANCE

See General Warnings on page 9.

To ensure trouble-free vehicle performance, it is very important to follow an established preventive maintenance program. Regular and consistent vehicle maintenance can prevent vehicle downtime and expensive repairs that can result from neglect. Use the Pre-Operation and Daily Safety Checklist on page 14, the Performance Inspection on page 14, and the following Periodic Service Schedule and Periodic Lubrication Schedule to keep the vehicle in proper working condition.

Any vehicle not functioning correctly should be removed from use until it is properly repaired. This will prevent further damage to the vehicle and avoid the possibility of injury due to unsafe conditions.

Contact your local HuntVe dealer to perform all repairs and semiannual and annual periodic service.

Periodic Service Schedule

WARNING

- If any problems are found during scheduled inspection or service, do not operate the vehicle until repairs are made. Failure to make necessary repairs could result in fire, property damage, severe personal injury, or death.
- Do not wear loose clothing or jewelry, such as rings, watches, chains, etc., when servicing the vehicle.
- Turn key switch to the OFF position, remove the key, place the Forward/Reverse handle in the NEUTRAL position, and chock wheels prior to servicing.
- Hot! Do not attempt to service hot motor or resistors. Attempting to do so could cause severe burns.
- Do not work on the vehicle power train or under the cargo bed when it is loaded.

PERIODIC SERVICE SCHEDULE

See General Warnings on page 8.

WARNING

- Service, repairs, and adjustments must be made per instructions in the maintenance and service manual.

NOTE: *If the vehicle is constantly subjected to heavy use or severe operating conditions, the preventive maintenance procedure should be performed more often than recommended in the periodic service and lubrication schedules.*

Both the Periodic Service Schedule and Periodic Lubrication Schedule must be followed to keep vehicle in optimum operating condition.

| PERIODIC SERVICE SCHEDULE | | |
|---|--|--|
| REGULAR INTERVAL | SERVICE | |
| Daily service by owner | Pre-Operation and Daily Safety Checklist | See Pre-Operation and Daily Safety Checklist on page 14. |
| | Performance Inspection | See Performance Inspection on page 15. |
| | Batteries | Charge batteries (after each daily use only). |
| Weekly service by owner | Batteries | Check electrolyte level. Add water if necessary. See page 25. |
| Monthly service by owner or trained technician | Batteries | Wash battery tops and clean terminals with baking soda/water solution. |
| | Tires | Check air pressure and adjust if necessary. |
| | | |
| | General vehicle | Wash battery compartment and underside of vehicle. |
| Semiannual service by trained technician only(every 50 hours) | Brake system | Check brake pads; replace if necessary. |
| | | Lubricate brake slides per Lubrication Schedule. |
| | | Check brake lines for damage; replace if necessary. |
| | Electrical wiring and connections | Check for tightness and damage. |
| | Forward/Reverse switch | Check condition of contacts and wire connections. Make sure connections are tight. |
| | Front wheel alignment and camber | Check and adjust as required. See |
| | Electronic Throttle | Check for loose hardware, cracks and other damage. |
| Annual service by trained technician only(every 100 hours) | Batteries | If batteries are not performing as expected. |

WARNING

- If any problems are found during scheduled inspection or service, do not operate the vehicle until repairs are made. Failure to make necessary repairs could result in fire, property damage, severe personal injury, or death.

PERIODIC LUBRICATION SCHEDULE

| PERIODIC LUBRICATION SCHEDULE | | | |
|--|---|--------------------|---|
| REGULAR INTERVAL | SERVICE | LUBRICATION POINTS | RECOMMENDED LUBRICANT |
| Semiannually by owner or trained technician (every 50 hours) | Brake pedal shaft bearings | | Dry Moly Lube |
| | Brake linkage and pivots | | Dry Moly Lube |
| | Accelerator pivot rod supports | | Dry Moly Lube |
| | | | |
| | Charger receptacle (all vehicles). Forward/Reverse switch contacts* | | WD-40 |
| | Brake slides | | Dry Moly Lube |
| | suspension (8 fittings) | | Chassis Lube – EP NLGI Grade 2 |
| Annually by trained technician only (every 100 hours of operation) | Check/fill transaxle to plug level | | 22 oz. (0.67 liters) 22 oz. (0.67 liters) SAE 85-90 WT. API Class SE, SF, or SG Oil (or higher) |
| | | | |

VEHICLE CONTROLLER

The electric vehicle is equipped with a solid state speed controller. In order to properly service and maintain the solid state controller vehicle, it is necessary to understand the electrical circuitry and the functions of all components in both systems. Therefore, if any repair or servicing needs to be performed, we recommend that it be performed by an authorized HuntVe dealer using HuntVe OEM parts.

BATTERIES

See General Warnings on page 8.

DANGER

- **Battery – Explosive gases! Do not smoke. Keep sparks and flames away from the vehicle and service area. Ventilate when charging or operating vehicle in an enclosed area. Wear a full face shield and rubber gloves when working on or near batteries.**
- **Charge batteries in a well-ventilated area only. Batteries emit hydrogen while being charged. Hydrogen is an explosive gas and must never exceed a level of 2% of the air.**
- **Battery – Poison! Contains acid! Causes severe burns. Avoid contact with skin, eyes, or clothing. Antidotes:**
- **External: Flush with water. Call a physician immediately.**
- **Internal: Drink large quantities of milk or water followed with milk of magnesia or vegetable oil. Call a physician immediately.**
- **Eyes: Flush with water for 15 minutes. Call a physician immediately.**

WARNING

- **Wear safety glasses or approved eye protection when servicing the vehicle or battery charger. Wear a full face shield and rubber gloves when working on or near batteries.**
- **Use insulated tools when working near batteries or electrical connections. Use extreme caution to avoid shorting of components or wiring.**

CAUTION

- **On all vehicles, turn off all accessories before charging batteries.**

NOTE: *Recycle or dispose of discarded batteries in accordance with local, state, and federal regulations.*

HuntVe electric vehicles use both deep-cycle lead acid batteries and AGM batteries. Automotive batteries should never be used.

New Deep Cycle Lead Acid batteries will not deliver their full capabilities until they have been discharged and recharged 20 to 50 times. To obtain the maximum service life from new batteries, **restrict vehicles with new batteries to 50% discharge for the first 10-12 charges.** Batteries should be fully charged before first use of new vehicle, before first use of a vehicle after storage, and before releasing vehicle for use each day.

DEEP CYCLE LEAD ACID BATTERY CARE

To keep batteries in good working condition, follow this maintenance program on a regular basis:

Batteries

1. The batteries should be kept clean and free of corrosion. Wash tops and terminals of batteries with a solution of baking soda and water (1 cup (237 mL) baking soda per gallon (3.8 L) of water). Rinse solution off of the batteries. Do not allow this solution to enter the battery. Be sure terminals are tight. Let the terminals dry and then coat with Battery Terminal Protector Spray. **See following NOTE.**

NOTE: Dispose of waste water properly.

2. The electrolyte level in the batteries should be checked weekly (**Figure 14**). Add water only after charging unless the electrolyte level is below the top of the plates. In this case, add just enough water to cover the plates, charge and then check the level again. Never charge batteries if plates are exposed above electrolyte level. For best battery life, add only distilled water. **See following CAUTION and NOTE.**

CAUTION

- **Do not overfill the batteries.** **NOTE:** A battery watering gun or bottle is available at many auto parts dealers.

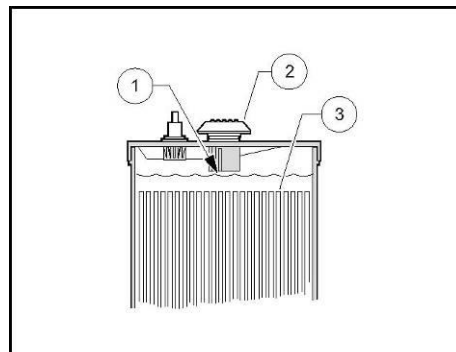


Figure 14 Battery Electrolyte Level

1. Level Indicator 2. Cap 3. Plates Electrolyte level at least 1/2 inch (13 MM) above plates or to level indicator.

3. The hold-down straps should be tight enough so that the batteries do not move while the vehicle is in motion, but not so tight as to crack or buckle the battery case. Tighten hold-down retaining nuts to 40 inlb (4.5 N·m). The terminal connections should be clean and tight, and any worn insulation or frayed wires should be replaced. Tighten battery terminals to 110 in-lb (12.4 N·m). **See following WARNING.**

WARNING

- If battery wire terminals are damaged or corroded, replace or clean them as necessary. Failure to do so may result in a fire hazard.
4. After use, the batteries should be placed on charge. The batteries should never be left discharged any longer than absolutely necessary (do not leave discharged overnight).

AGM (Absorbed Glass Mat) BATTERY CARE

To keep batteries in good working condition, follow this maintenance program on a regular basis:

Batteries

1. The AGM battery is sealed and does not need the fluid levels checked.
2. The batteries should be kept clean. Wash tops and terminals of batteries with a solution of baking soda and water (1 cup (237 mL) baking soda per gallon (3.8 L) of water). Rinse solution off of the batteries. Be sure terminals are tight. Let the terminals dry and then coat with Battery Terminal Protector Spray. **See following NOTE.**

NOTE: *Dispose of waste water properly.*

2. The hold-down straps should be tight enough so that the batteries do not move while the vehicle is in motion, but not so tight as to crack or buckle the battery case. Tighten hold-down retaining nuts to 40 inlb (4.5 N·m). The terminal connections should be clean and tight, and any worn insulation or frayed wires should be replaced. Tighten battery terminals to 110 in-lb (12.4 N·m). **See following WARNING.**

WARNING

- If battery wire terminals are damaged replace or clean them as necessary. Failure to do so may result in a fire hazard.
3. After use, the batteries should be placed on charge. The batteries should never be left discharged any longer than absolutely necessary (do not leave discharged overnight). If extended storage (1 week or more) the vehicle Run/Tow switch under the dash above the accelerator (see image below) needs to be placed in the Tow position.

Batteries that are left in a discharged condition may be damaged beyond repair voiding any stated warranty.

BATTERY CHARGER

DANGER

- With Deep Cycle flooded batteries. The charging area must be ventilated. Hydrogen level in the air must never exceed 2%. The total volume of air in the charging area must be changed five times per hour. Exhaust fans should be located at the highest point of the roof. Contact a local HVAC engineer.
- Do not charge the vehicle batteries with the vehicle covered or enclosed. Any enclosure or cover should be removed or unzipped and pulled back when batteries are being charged. An accumulation of hydrogen gas could result in an explosion.

WARNING

- Only trained technicians should repair or service the charger. Contact your nearest HuntVe dealer.
- Each charger should have its own dedicated 15 or 20 ampere separately protected (circuit breaker or fuse) single phase branch circuit, in accordance with all applicable electrical codes for the location.
- Connect the charger AC supply cord to a properly grounded, three-wire outlet of the proper voltage and frequency as shown on the charger.
- Do not use an adapter to plug the charger with a three-prong plug into a two-prong outlet. Improper connection of the equipment-grounding conductor can result in a fire or an electrical shock.
- An extension cord or electrical outlet must accept a three-prong plug. Extension cord should be a three-wire No. 14 AWG (American Wire Gauge) or No. 16 SWG (British Standard Wire Gauge), and be as short as possible. The use of improper extension cord could result in fire or an electrical shock.
- Do not operate the charger if it has received a sharp blow, was dropped, or otherwise damaged in any way.
- Have worn, cut, or damaged power cords or wires replaced immediately.
- Do not use near fuels, grain dust, solvents, thinners, or other flammables. Chargers can ignite flammable materials and vapors.
- Do not expose to rain or any liquid. Keep the charger dry.
- Never push objects of any kind into the charger through cabinet slots. They may touch dangerous voltage points or cause an electrical short circuit that could result in fire or electrical shock.
- Do not connect a stationary charger to the receptacle if the charger cord, plug, or the vehicle receptacle is broken, damaged, or does not make a good electrical connection. Fire or personal injury can result. Have a qualified technician replace the parts.
- When the charger is on, the charger DC cord may be disconnected from the vehicle receptacle slowly. Jerking or pulling the DC cord out quickly could cause arcing and burning that could damage the plug and receptacle and could cause batteries to explode.
- Do not block or cover the charger ventilation slots. The slots provide ventilation and protect the charger from overheating.
- Do not allow clothing, blankets, or other material to cover the charger.
- Do not allow the charger to operate for more than 30 minutes at 19 or more amperes.
- Install surge arrestors on incoming AC power lines. Surge arrestors will help protect electrical components in the charger and on the vehicle from all but direct or close lightning strikes.

Battery Charger Storage Feature

NOTE: Because the charger has a storage charge feature that automatically checks and recharges the batteries as necessary every day, the charger can remain plugged to the vehicle throughout the storage period and the vehicle tow switch should be placed in the Tow position.

Each electric vehicle is supplied with a fully automatic battery charger as standard equipment. The AC cord to each charger is to be connected to a source capable of supplying 15 amperes minimum per charger.

To reduce the risk of electric shock, the battery charger must be grounded. The charger is equipped with an AC electric cord having an equipment-grounding conductor and a grounding type plug. The AC plug must be connected to an appropriate receptacle that is properly installed and grounded in accordance with the National Electrical Code and all local codes and ordinances. See the owner's manual supplied with the charger for specific operating instructions before using the charger.

The use of an extension cord with the charger should be avoided. If an extension cord must be used, use a three-conductor no. 14 AWG (American Wire Gauge) or no. 16 SWG (British Standard Wire Gauge), heavy-duty cord with ground, properly wired and in good electrical condition. Keep it as short as possible (no more than 12 feet (3.7 m)). Place all cords so they will not be stepped on, tripped over, or otherwise subject to damage or stress.

Ensure that the charger ventilation slots are unobstructed and that there is adequate ventilation.

CHARGING BATTERIES

WARNING

- Be sure all wire connections at the receptacle and the fuse link are clean and tight.
- Do not rock or bend the plug. To connect the charger plug to the vehicle receptacle, grasp the plug handle and push the plug straight into the receptacle (Figure 15, Page 31).
- Do not pull on the DC cord (Figure 16, Page 31). Do not twist rock or bend the plug. To disconnect the charger plug from the vehicle receptacle, grasp the plug by the handle and pull the plug straight out of the receptacle.
- Do not connect a charger to the receptacle if the charger cord, plug, or the vehicle receptacle is broken, damaged in any manner, or does not make a good electrical connection. Fire or personal injury can result. Have it replaced by a qualified service person immediately.
- Failure to follow these instructions could result in damage to the charger cord, the plug, and (or) the vehicle receptacle.
- Do not use a charger if:
 - The plug is too loose or does not make a good connection.
 - The plug and receptacle feel hotter than normal during charge.
- The plug pins or receptacle contacts are bent or corroded.
- The plug, receptacle, or cords are cut, worn, have any exposed wires or are damaged in anyway.
- Using the charger with any of the above symptoms could result in a fire, property damage, personal injury, or death.

NOTE: When temperatures fall below 65 °F (18.3 °C), batteries charged in unheated areas should be placed on charge as soon as possible after use. Batteries are warmest immediately after use, and cold batteries require more time to fully charge.

Insert the charger DC plug into the vehicle receptacle. The charger will turn on two to ten seconds later (Figure 15).

When inserting the DC plug, align the raised guide on the plug with the guide slot in the receptacle and push straight in slowly.

Other HuntVe models or vehicles made by other manufacturers may not be compatible.

As long as the charger is allowed to shut off by itself, the batteries will be fully charged. Overcharging and undercharging will normally be prevented.

Batteries should be put on charge even if they have been used for only a short period. The charger is automatic and will turn off when batteries are fully charged. If the charger does not seem to be operating properly, or if the batteries seem weak, contact your local HuntVe dealer.

PLUG AND RECEPTACLE

The charger cord, plug, and receptacle are wear items and should be inspected daily. Visually inspect them for cracks, loose connections, and frayed wiring; they must be replaced when worn or damaged. If charger plug or receptacle show signs of corrosion or the plug is difficult to insert or remove the receptacle contacts and plug terminals should be cleaned with a good electrical contact cleaner or lightly sprayed with WD-40[®] brand spray lubricant. The plug should then be inserted and removed several times to ensure ease of insertion, ease of removal, and good electrical contact.

CLEANING THE VEHICLE

HuntVe vehicles are equipped with ArmorFlex[®] front and rear bodies. Use only commercially available automotive cleaners with a sponge or soft cloth for normal cleaning. A garden hose at normal residential water pressure is adequate.

The use of any type of pressure washing or steam cleaning system is not recommended. Such a process (especially if the vehicle has an ArmorFlex rear body that is removed) will expose electrical components to moisture. Moisture entering electrical components can result in water damage and subsequent component failure.

Use non-abrasive wax products. Battery acid, fertilizers, tars, asphalt, creosote, paint, or chewing gum should be removed immediately to prevent possible stains.

Accessories

The seats of the vehicle will last longer with proper cleaning. Use a solution of 10% liquid soap and warm water applied with a soft cloth. For imbedded dirt, a soft bristle brush may be used. For heavy soiling, difficult stains or scratches, blemishes, or other body damage, see Section 4 of the appropriate maintenance and service manual.

NOTE: *Dispose of waste water properly.*

ACCESSORIES

There is a complete line of accessory equipment available from HuntVe and our dealers. You can obtain the name and phone number of your closest HuntVe contact by visiting our web site at www.HuntVe.com and clicking the “*Dealer Locator*” link.

Care should be taken that these accessories are properly installed by trained technicians, and that they are used in the manner for which they were designed. **See following WARNING.**

WARNING

- **Tinted windshields and weather-proof enclosures will not protect occupants from flying objects.**

SUBSEQUENT OWNER REGISTRATION

In the event a vehicle is bought as a used vehicle, we strongly urge the new owner to register the vehicle with HuntVe. This will enable us to contact you if the need arises. Please send your name, address, and serial number(s) of the vehicle(s) by fax or email to Martex Global Enterprise L.L.C. fax 888.271.2815 email info@huntve.com.

SPECIFICATIONS – 2-PASSENGER AND 4-PASSENGER

| SPECIFICATIONS | 2-PASSENGER | 4 -PASSENGER |
|--|----------------------------|-------------------|
| POWER SOURCE | | |
| Drive motor: Direct drive, 48/64/72volts DC, shunt-wound, 18 hp front – 20 hp rear | • | • |
| Transaxle: Double reduction helical gear with 12.3:1 direct drive axle | • | • |
| Electrical system: 48/64/72 volts DC | • | • |
| Batteries: High capacity, deep cycle, or AGM | • | • |
| Charger: Automatic, 48/64/72volt; UL and CSA listed | • | • |
| STEERING/SUSPENSION/BRAKES | | |
| Steering: Self-adjusting rack and pinion | • | • |
| Front Suspension: Tapered double a-arm with dual coil over hydraulic shocks | • | • |
| Rear Suspension: Tapered double a-arm with dual coil over hydraulic shocks | • | • |
| Brakes: 4 wheel hydraulic – 4 wheel disc brakes with lever pull park brake | • | • |
| BODY/CHASSIS | | |
| Frame/Chassis: Powder coated heavy duty steel | • | • |
| Front and rear body: ArmorFlex® | • | • |
| Body finish: Water transfer camo and solid colors | • | • |
| Tires: Rough terrain with 12" steel/aluminum wheels | • | • |
| DIMENSIONS/WEIGHT | | |
| Overall length | 114 in. (232 cm) | 137 in. (348 cm) |
| Overall width | 57 in. (145 cm) | 57 in. (145 cm) |
| Overall height (with canopy) | 76 in. (193 cm) | 77 in. (196 cm) |
| | | |
| Wheelbase | 75 in. (190 cm) | 101 in. (257 cm) |
| Ground clearance | 11.75 in. (30 cm) | 11.75 in. (30 cm) |
| | | |
| | | |
| Weight (without batteries) | 1175lb. | 1400lb. |
| Forward speed | 18 - 25 mph | |
| Curb clearance circle (diameter) | 23 ft. | |
| Standard seating capacity (Box bed vehicles) | 2 | |
| Standard seating capacity (Four-passenger vehicle) | 4 | |
| LIQUID CAPACITIES | | |
| Transaxle | 22 oz. (0.67 liters) | |
| TIRE PRESSURE | | |
| Front and rear: Off-road tread | 14-18 psi (0.96-1.24 Bars) | |

HUNTVE® LIMITED ONE YEAR WARRANTY

1. WARRANTY:

Martex Global Enterprise L.L.C., ("HUNTVE") hereby warrants to the Purchaser that its Vehicle purchased from HUNTVE shall be free from defects in material and workmanship under normal use and service for the periods stated below, subject to the provisions, limitations and exclusions contained in this limited warranty. **This warranty applies to original Purchaser owner only and is nontransferable.**

LIMITED ONE YEAR WARRANTY: All original equipment including battery charger and solid state speed controller, supplied by HUNTVE are warranted with respect to parts and labor against defects in material and workmanship for a period of one year from the date of purchase.

This limited warranty covers material, workmanship and repair labor cost listed above for the period specified. Such repair labor shall be performed only by HUNTVE, its authorized distributors or dealers, or a service agency approved by HUNTVE.

IF THE WARRANTY REGISTRATION FORM IS NOT COMPLETED AND RETURNED TO HUNTVE AT THE TIME OF THE ORIGINAL RETAIL SALE, PURCHASER MUST PROVIDE PROOF OF DATE OF PURCHASE WITH ANY WARRANTY CLAIM.

2. EXCLUSIONS:

Excluded from any HUNTVE warranty are all fuses, decals (except safety decals), light bulbs, lubricants, trim pieces, seats, routine wear items such as the charger plug and receptacle, brake shoes, CV boots, belts, brushes, bushings, drive buttons, mats and pads, maintenance adjustments, cosmetic deterioration, and items which deteriorate or fail due to exposure or ordinary wear and tear. Also excluded from any HUNTVE warranty is damage to a vehicle or component resulting from a cause other than a defect including unreasonable or unintended strain or use, improper installation of accessories, installation of parts or accessories that are not original equipment, overloading, accident, alteration, abuse or neglect.

Transportation expenses for warranty services are also excluded from this warranty.

3. VOIDING OF WARRANTY:

THIS AND ANY OTHER WARRANTY SHALL BE VOID IF THE VEHICLE IS ABUSED OR USED IN AN UNINTENDED MANNER OR SHOWS INDICATIONS THAT IT HAS BEEN ALTERED IN ANY WAY, INCLUDING, BUT NOT LIMITED TO, MODIFICATION OF THE SPEED GOVERNOR, BRAKING SYSTEM, STEERING, TRANSAXLE, OR OTHER OPERATING SYSTEMS OF THE VEHICLE TO CAUSE IT TO PERFORM OUTSIDE HUNTVE SPECIFICATIONS. THE WARRANTY IS LIKEWISE VOID IF THE VEHICLE INVOLVED SHOWS INDICATIONS THAT REASONABLE OR NECESSARY MAINTENANCE AS OUTLINED IN THE OWNER'S MANUAL AND MAINTENANCE AND SERVICE MANUAL WAS NOT PERFORMED AT THE TIME AND IN THE MANNER SPECIFIED IN SUCH MANUALS.

4. SOLE REMEDY:

HuntVe's liability under this limited warranty or in any action whether based upon warranty, contract, negligence, strict product liability, or otherwise, shall be the repair or replacement, at HuntVe's option, of the vehicle or component thereof that HUNTVE deems to be defective. Replacement shall mean furnishing, during the applicable limited warranty period, a factory-reconditioned vehicle or component thereof that is identical or reasonably equivalent to the warranted product or component at no cost to the purchaser. Repair shall mean remedying a defect in the vehicle or component thereof at no cost to the purchaser during the applicable limited warranty period. If HUNTVE elects to repair the vehicle, it may provide factory-reconditioned parts or components. All parts and components replaced under warranty shall become the property of HUNTVE.

5. HOW TO MAKE A WARRANTY CLAIM:

To make a warranty claim under this limited warranty, you must present the vehicle or defective component to an authorized HUNTVE dealer or send the defective component; freight prepaid, to WARRANTY SERVICES, Martex Global Enterprise L.L.C. 808 E Mason St Fort Worth, TX 76110

6. DISCLAIMER:

THIS LIMITED WARRANTY IS EXCLUSIVE. HUNTVE MAKES NO OTHER WARRANTY OF ANY KIND, EXPRESSED OR IMPLIED. ANY IMPLIED WARRANTIES OF MERCHANTABILITY OR FITNESS FOR A PARTICULAR PURPOSE WHICH EXCEED THE OBLIGATIONS OR TIME LIMITS STATED IN THIS WARRANTY ARE HEREBY DISCLAIMED BY HUNTVE AND EXCLUDED FROM THIS WARRANTY. THE PURCHASER AND HUNTVE EXPRESSLY AGREE THAT THE REMEDY OF THE REPLACEMENT OR REPAIR OF THE DEFECTIVE VEHICLE OR COMPONENT THEREOF IS THE SOLE REMEDY OF THE PURCHASER. HUNTVE MAKES NO OTHER REPRESENTATION OR WARRANTY OF ANY KIND, AND NO REPRESENTATIVE, EMPLOYEE, DISTRIBUTOR OR DEALER OF HUNTVE HAS THE AUTHORITY TO MAKE OR IMPLY ANY REPRESENTATION, PROMISE OR AGREEMENT, WHICH IN ANY WAY VARIES THE TERMS OF THIS WARRANTY.

7. NO CONSEQUENTIAL DAMAGES:

IN NO EVENT SHALL HUNTVE BE LIABLE FOR ANY INCIDENTAL OR CONSEQUENTIAL DAMAGES INCLUDING, BUT NOT LIMITED TO, LOSS RELATED TO PROPERTY OTHER THAN THE VEHICLE, LOSS OF USE, LOSS OF TIME, INCONVENIENCE, OR ANY OTHER ECONOMIC LOSS.

Some states allow neither limitation on the duration of an implied warranty nor exclusions or limitation of incidental or consequential damages. Therefore, the above limitations or exclusions may not apply to you.

This warranty gives you specific legal rights, and you may also have other rights, which vary from state to state.

8. INFORMATION:

For further information contact WARRANTY SERVICES, Martex Global Enterprise L.L.C. 808 E Mason St, Fort Worth, TX 76110 888.554.5953

9. WARNING:

Any modification or alteration of any vehicle beyond factory specifications, including those that affect the weight distribution, stability, or speed of the vehicle, can cause serious personal injury or death.

Publication Part Number HV1003

| | | |
|--|--------------|----------------|
| Martex Global Enterprise L.L.C. Fort Worth, TX 76110 USA | Web | www.HuntVe.com |
| | Phone | 1.888.554.5953 |
| | Fax | 1.888.271.2815 |



Flexibility

- Programmable to match the unique characteristics of each separately excited motor model
- Programmable low-voltage battery discharge interrupt (BDI) cutbacks will limit motor current to extend the battery charge
- Up to three speed limit inputs with programmable cut-back speeds and priority level

Control

- Full bridge field control design allows reversing without the use of direction contactors
- Armature current controlled at all times to help reduce brush wear and arcing
- Regenerative braking harnesses excess energy to extend the battery charge
- Motor over-speed protection is ensured using the motor field

Communications

- Integrated LEDs flash information and error codes for basic controller diagnostics
- Protected I/O connections

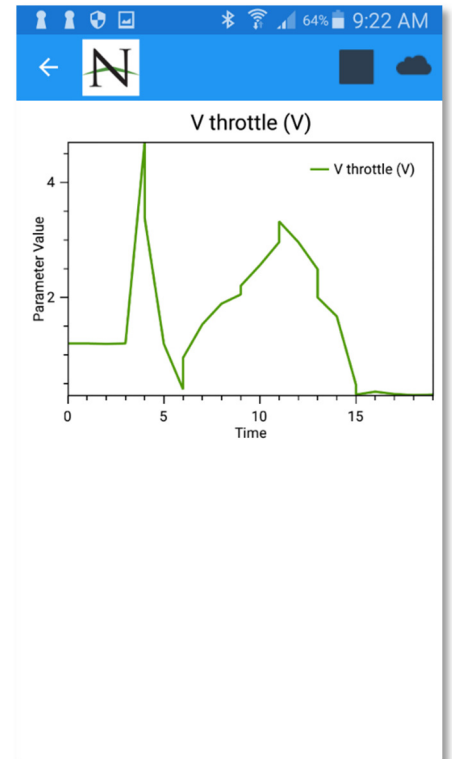
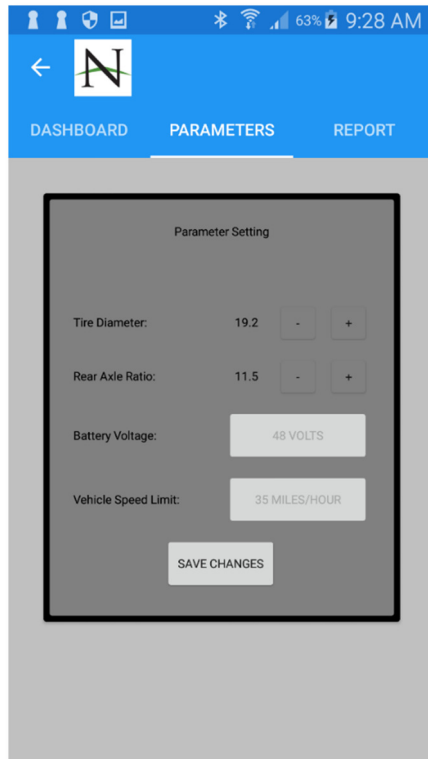
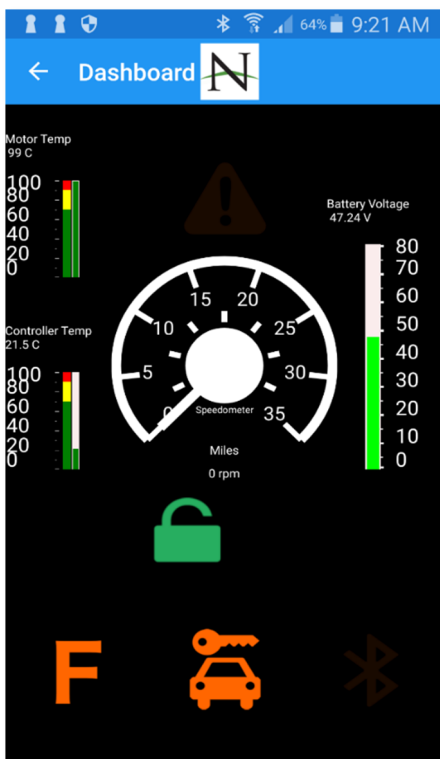
Safety

- Regenerative braking provides vehicle speed control at any throttle position when going down ramps and channels the extra energy back into the batteries for longer battery life
- Adjustable regen settings allow for braking strength to be tailored to the specific vehicle for safety during stopping and forward/reverse transitions
- Safe-Sequencing including high pedal disable (HPD) and static-return-to-off (SRO) interlock ensure safe startup and vehicle operation
- Controlled temperature cutback on armature and field drive current limits ensures there is no sudden loss of power under any thermal condition

FEATURES AND BENEFITS

Apps and Configuration Tools (TSX3.0 Controller only)

- Various iOS and Android apps for smart phones and tablets are available at the App Store and Google Play (Free APPs).
 - Android Phones-Down Load from Google Play-Search Apps-“Navitas Vehicle Systems Ltd”
 - Select-Install
 - iPhone-Down Load from App store-Search “Dashboard Navitas”
 - Select-Install
 - Complete Installation of Controller in Vehicle
 - Make sure Bluetooth is turned on your phone to make app work



- Publicly available Dashboard Apps allow the vehicle owners to remotely lock their vehicle, monitor usage and performance or notify their dealers with diagnostic information
- Authorized Dealer Apps allow modifications for basic vehicle types and settings.



HuntVe Speedometer Button Function

WARNING

All Adjustments will require the key switch to be in the on position. Make sure the vehicle forward-reverse switch is in the neutral position.

24 Hour Clock Adjustment

1. While in the normal display status press the SET button for at least 3 seconds and release when the hour screen displays and the hour is flashing.
2. Press the ADJ button to change the hour.
3. Press the SET button until the minute number is flashing.
4. Press the ADJ button
5. The normal display will return after 5 seconds of no activity.

KM/MPH Adjustment

1. While in the normal display status press the SET button for at least 3 seconds and release when the hour screen displays and the hour is flashing.
2. Press the SET button until the km/mph display is flashing.
3. Press the ADJ button to change to km or mph.
4. The normal display will return after 5 seconds of no activity.

Reset Trip Mileage.

1. Press and hold the ADJ button until the trip mileage clears.
2. The normal display will return after 5 seconds of no activity.

Adjust the Screen Brightness

1. Press the ADJ button and release.
2. The screen brightness number will display. The number 1 is the darkest and 5 is the lightest.
3. Press and hold the ADJ button to change the number.
4. Press the ADJ button to return to the normal display.
5. The normal display will return after 5 seconds of no activity.

HuntVe Dash Display

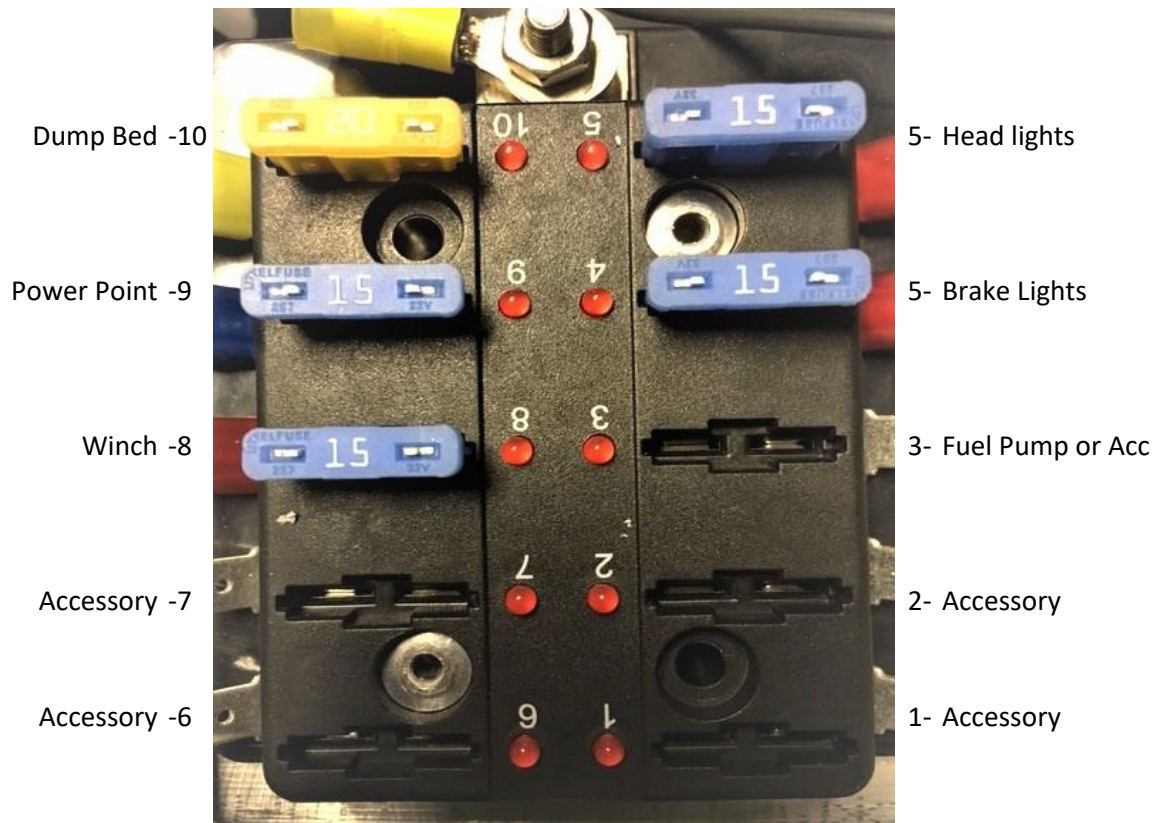


The dash display provides the vehicle driver with real time battery voltage condition:

1. With the horse power demand from the motors
2. With the traction resistance
3. With the throttle demand

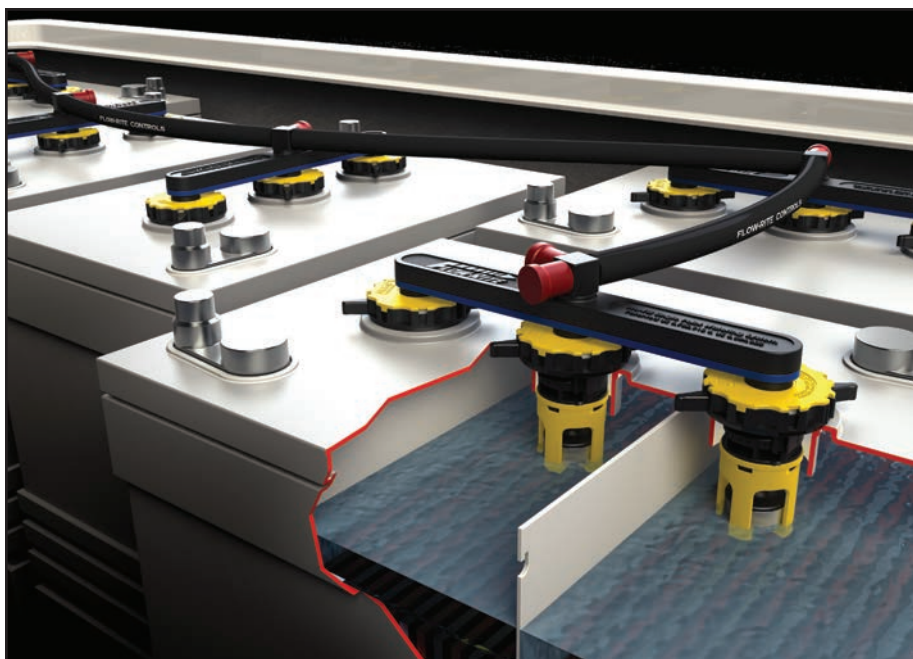
This display works like a fuel Mileage feature - the higher you keep the battery voltage the longer the range you will get.

2016 and up Fuse Box Diagram





Installation, Operation & Maintenance Manual



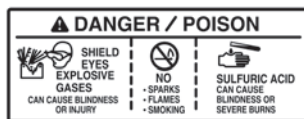
Picture may differ from your specific application

For Pro-Fill kits with part numbers beginning in "BG"

BL-175
9-20-13

General Information & Precautions

This publication provides detailed instructions for installing the single point watering system kit. Thoroughly review this document before any installation procedures are performed.



The following safety statements relate to specific safety issues and must be read, understood, and heeded before a kit is installed. Failure to do so could result in personal injury and/or property damage.

DANGER

- Battery – Explosive gases! Do not smoke. Keep sparks and flames away from the vehicle and service area. Ventilate when charging or operating vehicle in an enclosed space. Wear a full face shield and rubber gloves when working on or near batteries.
- Battery – Poison! Contains acid! Causes severe burns. Avoid contact with skin, eyes, or clothing.

Antidotes:

- External: Flush with water. Call a physician immediately.
- Internal: Drink large quantities of milk or water. Follow with milk of magnesia or vegetable oil. Call a physician immediately.
- Eyes: Flush with water for 15 minutes. Call a physician immediately.

WARNING

- Follow the procedures exactly as stated in this instruction, and heed all DANGER, WARNING, and CAUTION statements in this instruction as well as those on the vehicle and battery charger.
- Only trained technicians should service or repair the single point watering system. Anyone doing even simple repairs or service should have knowledge and experience in plumbing, electrical and mechanical repair. The appropriate instructions must be used when performing maintenance, service, or accessory installation.
- Prior to servicing the vehicle or leaving the vehicle unattended, turn the key switch OFF, remove the key, and chock the wheels when servicing the vehicle.
- Wear safety glasses or approved eye protection when servicing any part of the watering system. Wear a full face shield and rubber gloves when working on or near batteries.
- Do not wear loose clothing or jewelry such as rings, watches, chains, etc., when servicing the vehicle or battery charger.
- Moving parts! Do not attempt to service the vehicle while it is running.
- Use insulated tools when working near batteries or electrical connections. Use extreme caution to avoid shorting of components or wiring.
- If wires are removed or replaced, make sure wiring and wire harness are properly routed and secured. Failure to properly route and secure wiring could result in vehicle malfunction, property damage, personal injury, or death.

Package Contents



8-volt manifold shown

| <u>Kit Size</u> | <u>Qty of manifolds</u> |
|-----------------|-------------------------|
| 12 volt | 2 |
| 24 volt | 4 |
| 36 volt | 6 |
| 48 volt | 8 (6-volt manifolds) |
| 48 volt | 6 (8-volt manifolds) |



Note: pictures may differ slightly from your specific application

Installation

Step 1 - Remove Vent Caps and Insert Pro-Fill Manifold Assembly.



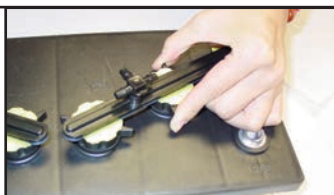
Step 2 - Press Manifold Home

- Ensure the rubber washer is correctly seated around the refill valve.



Step 3 - Secure Valves

- Rotate each valve 1/4 turn in a clockwise motion to secure it to the battery.



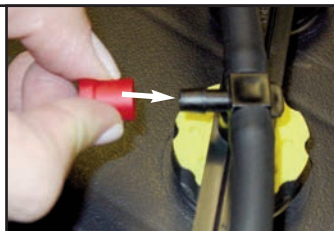
Step 4 -Install Tubing

Plumb all of the manifolds together with the included tubing. For precut kits, please see diagrams on the following page for proper tube routing . For universal kits, when cutting tubing ensure there is enough slack to create a slight bend in the tubing. Place the feed tube with coupler attached on a manifold that is near the middle of the plumbing so that water can be distributed to all batteries evenly.



Step 5 - Install Red Caps

- Place a red end cap on each of the remaining barbs.



Watering Procedures

1. Water After Charge

Electrolyte levels drop during discharge and rise during charge. In addition, charging generates heat, fluid expansion, and explosive gases. Watering a battery before charge (or with a low charge level) can lead to boil over, resulting in potential damage to the watering system, battery, and vehicle.

When needed, water must only be added to fully charged battery. If the battery has been neglected and water levels have fallen below the plates, water should be manually added to just cover the plates. After the battery has been charged you can finish topping up with the watering system.

2. Watering Intervals

Watering intervals are dependent on the local climate, charging methods, application, and age of batteries. Flow-Rite recommends checking consumption rates manually or with the optical indicator (when equipped). New batteries should be checked once a month and older batteries weekly until water consumption rates are known.

Typically for a heavy use application, watering a maximum of once per week is recommended, and for light use applications once per month. Do not water a battery that has been sitting for an extended period of time with no activity (non-use or not on charge) such as a battery that has sat idle over the weekend. It is best to water a warm battery that has just been fully charged.

Important: Water quality is important to maintain the life of your battery and watering system. Always use water that meets the quality requirements of your battery's manufacturer.

Operation

For successful operation of your Single Point Watering system always:

1. Only use Flow-Rite approved equipment.

Warning! Use of unapproved equipment or modification of approved equipment can lead to system failure and will void your warranty.

2. Always follow Flow-Rite's required watering procedures.
3. Perform regular scheduled maintenance!

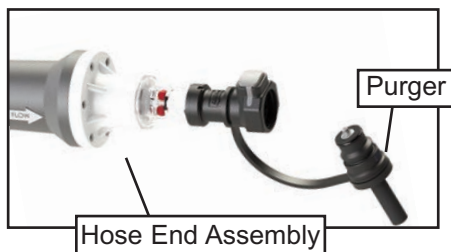
Warning! Only fill batteries after they have been fully charged and require water.

Important: If you are using a hand pump, cart, or gravity feed water supply to fill your Millennium SPW™ system, please refer to their instructions for proper operation!

Step 1 - Qualify Water Supply

- Check flow rate through included purger by mating purger with hose end assembly. Verify that a minimum of 2 GPM (gallons per minute) is achieved. This can be measured with a bucket and a stop watch or a watch with a second hand.

Note: Should a 2 GPM flow rate not be produced refer to the troubleshooting guide in your water supply's instruction booklet.



Step 2 - Remove Dust Cover



Operation Continued

Step 3 - Mate Couplers

- Insert the male coupler on the SPW system into the female coupler on the end of the water supply.



Step 4 - Observe Flow Indicator

- The red balls inside the flow indicator will begin to spin indicating that water is flowing into the battery. As the cells fill and the valves shut off, the balls will begin to spin slower until they come to a stop. This indicates that all valves have shut off and filling is complete.



Step 5 - Disconnect

- When the balls stop spinning, and not before, immediately disconnect the couplers by depressing the push button on the female coupler.

Warning! If the water supply is left connected after the filling process is finished, it could lead to an overflow.

Disconnecting before the balls come to a complete stop will lead to underfilled cells.



CAUTION: If at any time during the filling process you have a valve failure, disconnect immediately and refer to the troubleshooting section.

Step 6 - Replace Dust Cover

- Place dust cover back over the male coupler.



Regular Maintenance

Your single point watering system requires regular preventative maintenance on at least a quarterly basis.

1. Check all screens and/or filters on water supplies

Clean or replace all filters & line strainers as necessary. Failure to do so can cause a reduction in the water pressure and flow rates needed to operate the system properly. A filter screen can be found on the inlet of all regulators, and a line strainer on all supply hoses. Pump powered water supplies include a strainer on all suction hoses. For deionizers be sure to replace the filter cartridges as indicated by the water quality light. Consult your water supply's manual for detailed instructions.

2. Inspect the condition of all tubing, connections, and couplers.

Make sure that all parts are in good working condition and are secure, leak free, and properly connected. The coupler must have an O-ring and dust cover properly attached.

3. Electrolyte Levels

Flow-Rite recommends checking the electrolyte level in each cell for accuracy after the system has been installed and operational for three months.

Seasonal Maintenance

Water Supplies

Water supplies must be drained and stored in an empty state if they will be exposed to freezing temperatures. Failure to do so can cause permanent damage.

Watering Systems

If you have vehicles that are taken out of service or put into storage for a period of 6 weeks or longer, your single point watering system will require seasonal maintenance. To winterize the SPW system simply drain any remaining water from the feed tube. Additionally the following steps need to be followed when bringing your vehicle back into service.

1. After the batteries have been fully charged/equalized, connect the system to its water supply for 3-5 seconds then disconnect regardless of whether or not the batteries are completely full.
2. Return the vehicle back to normal operation.
3. Place the vehicle back into its regular watering schedule (waiting at least one week until next watering).

Operating Specifications

Operating Requirement of SPW system

| | |
|-----------------|---|
| Flow-Rate: | 2.0-5.0 gallons per minute* 7.6-19.0 Litres per minute |
| Pressure Range: | 3.0 - 35.0 PSI (no flow, static) 0.21-2.4 bar |
| Temp. Range: | Freezing - 150° F Freezing - 65.5° C |

Water Supply Operating Requirements

| | |
|----------------------|------------------------------|
| Inlet Pressure Range | 40-100 PSI (no flow, static) |
| Temp. Range | 33 - 150° F 1 - 65.5° C |

All product specifications and requirements should be met for proper operation of your Flow-Rite SPW system. Contact your battery supplier or Flow-Rite Controls if you have any questions regarding product specifications or how to verify a water supply.

*Flow rate should be measured at the end of a purger (female / male coupler combination).

Troubleshooting

If you notice reduced run time on your vehicle, check to see that each cell is filled to the proper level. In the event that a cell is not showing water, connect system to its water supply. Recheck the level of low cells. If they are still low, call for service.

In the event that a valve does not shut off, qualify water supply to ensure that it is producing 2GPM (measured through the purger). If the water supply qualifies, call for service. If it does not qualify, perform Maintenance procedures and requalify. If it does not qualify after performing Maintenance, call for service.

Warranty

5 Year Limited Warranty for Pro-Fill SPW

Flow-Rite Controls Warranty Policy for Millennium SPW Systems as used on flooded lead acid batteries

Flow-Rite Controls warrants to Purchaser that its product, the Pro-Fill Single Point Watering (SPW) kit, will be free of all defects in material and workmanship for five (5) years after the date of purchase. If within five years of the date of purchase, the Pro-Fill SPW kit, fails to perform due to a manufacturing defect, Flow-Rite Controls will repair or replace the Pro-Fill SPW kit free of charge.

A Return Goods Authorization Number (RGA) must be obtained from Flow-Rite Controls (through your Pro-Fill supplier) prior to returning product for warranty consideration. Purchaser must send any product covered under this warranty, along with a copy of supplier's invoice and description of the problem to: Flow-Rite Controls, 960 74th St SW, Byron Center, MI 49315.

Disclaimer of Warranties: It is expressly understood and agreed that Flow-Rite Controls shall not be liable for damages or injuries to persons or property. Failure to promptly report a malfunction in your system may limit your coverage. This limited warranty expressly excludes any incidental or consequential damages. Because Flow-Rite's warranty excludes any incidental or consequential damages, Flow Rite recommends for the first three months checking electrolyte levels once a month. Thereafter, check electrolyte level once per quarter.



Flow-Rite Controls
960 74th Street
Byron Center, MI 49315
PH: 616-583-1700 FAX: 616-878-5151
www.flow-rite.com

Wireless Connectivity to Your PCS Chargers & Wireless Enabled Battery Fuel Gauges

Eagle Performance Series Chargers DeltaView Link Connectivity

Pro Charging Systems DeltaView Link App allows you to access pertinent information from your iOS or Android mobile device. DVL provides quick and easy verification that your Lift/Golf Cart/Scrubber/LSV is fully charged and gives you instant access to the charging history data. DVL can assist in making service calls much more efficient, even eliminating some calls all together, which saves you/your company time and money.

Some of the useful information you can access with DVL App include:

- Charging Data History (up to 200 Cycles)
- State of Charge Screen allows you to quickly view if your equipment is fully charged or where it is in the process.
- Date and Time Stamp information lets you know when a charger was plugged in and when it was unplugged or lost power.
- Real time data as charging is in process.
- View battery type(s) and voltage indicators.
- Displays beginning battery voltage.
- Amp hours used/Amp hours replaced as well as percentage returned to the pack
- You have the ability to assign a name and/or an asset number to your charger for quick identification.
- Location Assistance with extended wireless range
- One button upload of your historical charging profile to an email.
- One button push to call PCS customer support.
- The capability to receive messages and update your charger to the latest firmware is coming.
- Access to our App tutorial, to set up videos, to definitions, FAQ's and more....

DeltaView Link is now available on most Eagle Performance Series and our Patriot Series chargers. DVL can be used with Golf Carts, LSV and various Industrial Equipment.

download on the [App Store](#) or get it on [Google Play](#)

DeltaView Link App Available Now

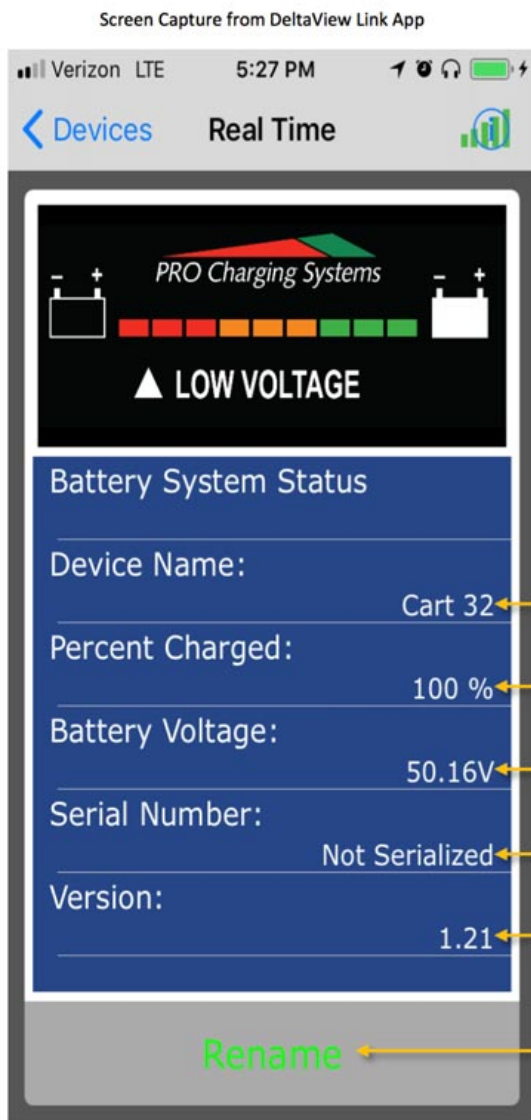
download for [iOS](#) and [Android](#)





Wireless Enabled Battery Fuel Gauge

DeltaView Link enabled battery fuel gauges allow you to monitor state of charge and voltage from your smart device.



The light bar displayed in our DVL App mimics the LED indicators on your BFG for quick state of charge status right from your phone or tablet.

Identifies which BFG battery or battery pack.

Percentage charged shown for reference.

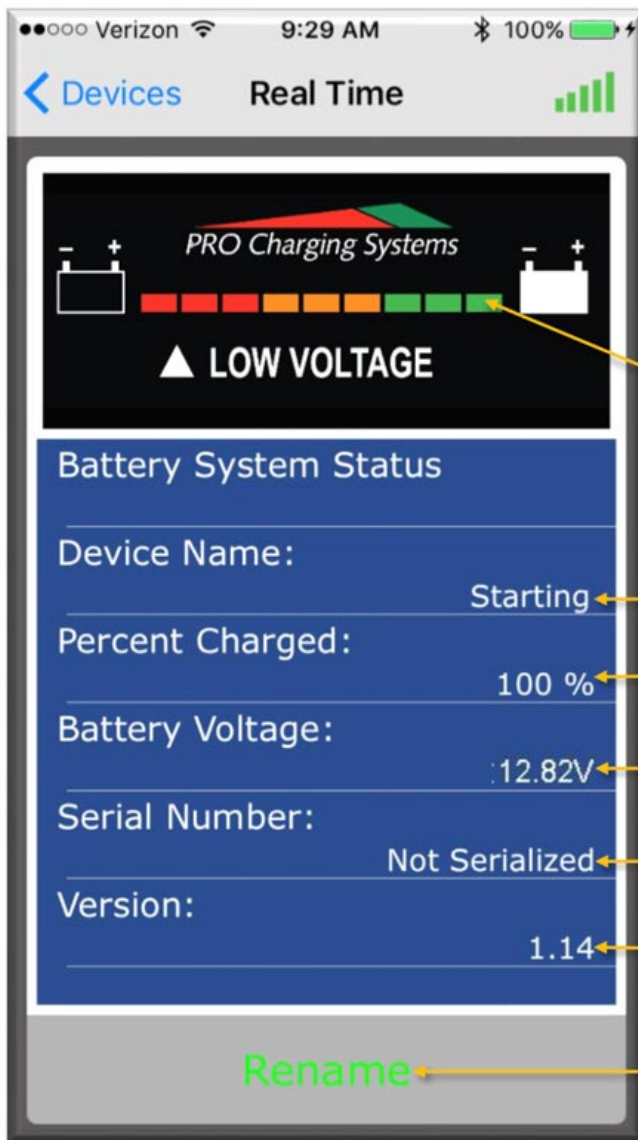
Real Time Battery Voltage is displayed.

Your BFG Serial Number will be listed here.

Shows the BFG Software Version.

Rename function allows you to personalize what you label your Battery Fuel Gauge or EPS charger.

For Golf, LSV & Industrial



The light bar displayed in our DVL App mimics the LED indicators on your BFG for quick state of charge status right from your phone or tablet.
Example Above: All lights on = 100% charged!

Starting

Identifies your Starting or Trolling battery(s).

100 %

Percentage charged shown for reference.

12.82V

Real Time Battery Voltage is displayed.

Not Serialized

Your BFG Serial Number will be listed here.

1.14

Shows the BFG Software Version.

Rename

Rename function allows you to personalize what you label your Starting & Trolling battery(s)

For Marine

download on the [App Store](#) or get it on [Google Play](#)

The Pro Charging Systems Advantage

Fill out the form below to get more information on PCS battery solutions. We guarantee the following:

- Longer Battery Life
- Reduced Warranty Returns
- Dramatic Cost Savings

Enter Your Name *

Enter Your Email *

Submit



PRO Charging Systems

Safety, Installation and Operating Instructions *Instructions importantes concernant la sécurité*

Manual for the following Battery Fuel Gauge models:

BFGOV12V, BFGOV24V, BFGOV36V, BFGOV48V, BFGOV64V and BFGOV72V



123015-70326

IMPORTANT NOTICE:

Please save and read these safety, operating and installation instructions before installing or using your Pro Charging Systems (PCS) product. Contact technical support at PCS with any product, installation, or service questions (800.742.2740).

Pro Charging Systems, LLC
LaVergne, TN 37086-3539

INSTRUCTIONS FOR THE FOLLOWING BATTERY PACK CONFIGURATIONS:

| Model | Description | Weight | Size | Sample Battery Configuration |
|---------|--------------------|--------|--------------------------|---|
| BFG 12V | Battery Fuel Gauge | 8 oz. | 0.35"H x 3.85"W x 2.40"L | 12V System Configuration - 1-12V Battery, 2-6V Batteries |
| BFG 24V | Battery Fuel Gauge | 8 oz. | 0.35"H x 3.85"W x 2.40"L | 24V System Configuration - 2-12V Batteries, 4-6V Batteries |
| BFG 36V | Battery Fuel Gauge | 8 oz. | 0.35"H x 3.85"W x 2.40"L | 36V System Configuration - 3-12V Batteries, 6-6V Batteries |
| BFG 48V | Battery Fuel Gauge | 8 oz. | 0.35"H x 3.85"W x 2.40"L | 48V System Configuration - 4-12V Batteries, 8-6V Batteries, 6-8V Batteries |
| BFG 64V | Battery Fuel Gauge | 8 oz. | 0.35"H x 3.85"W x 2.40"L | 64V System Configuration - 8-8V Batteries |
| BFG 72V | Battery Fuel Gauge | 8 oz. | 0.35"H x 3.85"W x 2.40"L | 72V System Configuration - 6-12V Batteries, 9-8V Batteries, 12-6V Batteries |

TABLE OF CONTENTS

| | |
|-------------------------------------|-----------|
| Important Safety Instructions..... | Pages 2-3 |
| Installation and Preparation | Page 4 |
| General Operation | Pages 4-6 |
| Battery Fuel Gauge Indications..... | Page 7 |
| Troubleshooting | Page 7-8 |
| Limited Warranty Information..... | Page 8 |

IMPORTANT SAFETY INSTRUCTIONS

INSTRUCTIONS IMPORTANTES CONCERNANT LA SÉCURITÉ

SAVE THESE INSTRUCTIONS. This manual contains important safety and operating instructions for future reference.

CONSERVER CES INSTRUCTIONS. CE MANUEL CONTIENT DES INSTRUCTIONS IMPORTANTES CONCERNANT LA SÉCURITÉ ET LE FONCTIONNEMENT.

Understand and relate the Hazard Levels and Signal Words utilized in this manual with the following definitions:



This symbol means: Immediate hazards, which will result in severe personal injury or death.



This symbol means: Hazards or unsafe practices, which could result in severe personal injury or death.



This symbol means: Hazards or unsafe practices, which may result in minor personal injury, product or property damage.



This symbol means BE ALERT! Your safety, or the safety of others, is involved!

PERSONAL SAFETY PRECAUTIONS



Always read all instructions before using your product!

1. **Wear complete eye protection and clothing protection.** Avoid touching eyes while working near battery. Have plenty of fresh water and soap nearby in case battery acid contacts skin, clothing, eyes, or other surfaces. If battery acid contacts skin or clothing, wash immediately with soap and water. If acid enters eye, immediately flood eye with running cold water for at least 10 minutes and seek medical attention promptly.
2. **Dress properly.** Wear protective, electrically nonconductive clothes and nonskid footwear. Remove personal metal items such as rings, bracelets, necklaces, and watches when working with a lead-acid battery. A lead-acid battery can produce a short-circuit current high enough to weld a ring or the like to metal, causing a severe burn. Wear restrictive hair covering to contain long hair.
3. **Avoid working alone.** Be sure someone is within range of your voice or close enough to come to your aid when you work near a lead-acid battery.
4. **Stay alert.** Watch what you are doing, and use common sense. Do not operate any equipment when you are tired.
5. **Keep children away.** Children must never be allowed in the work area. Do not let them handle machines, tools, battery chargers, or extension cords.
6. **Keep work area clean.** Cluttered areas invite injuries.
7. **Observe work area conditions.** NEVER smoke or allow a spark or flame in the vicinity of battery or engine. Don't expose to rain. Keep work area well lit.
8. **Do not overreach.** Keep proper footing and balance at all times. Do not reach over or across electrical cables or frames.
9. **Avoid electrical shock.** To reduce risk of electrical shock, unplug charger from outlet before attempting any maintenance or cleaning.
10. **Do not operate product with damaged electrical wiring or connections.** If damaged, replace the electrical wiring or connections immediately.
11. **Store idle equipment.** When not in use, store equipment in a dry location to inhibit rust. Always lock up tools and equipment and keep out of reach of children.
12. **Maintain battery fuel gauge with care.** Inspect periodically and, if it has received a sharp blow, been dropped, or otherwise damaged in any way, have it repaired by an authorized technician. Do not disassemble battery fuel gauge; contact PCS technical support when service or repair is required (800.742.2740). Incorrect reassembly may result in risk of electrical shock or fire.
13. **Check for damaged parts.** Before using any PCS product, carefully check any part that appears damaged to determine that it will operate properly and perform its intended function. Check for broken parts and any other condition that may affect proper operation. Any part that is damaged should be properly repaired or replaced by a qualified technician. Do not use the product if any part does not operate properly.
14. **Replacement parts and accessories.** When maintaining, only use accessories intended for use with this product. Approved accessories are available from Pro Charging Systems (800.742.2740).

SAVE THESE INSTRUCTIONS!

INSTALLATION AND PREPARATION



WARNING To reduce risk of battery explosion, follow these instructions, those published by the battery manufacturer, and by the manufacturer of any equipment that you intend to use in the vicinity of battery. Review all cautionary markings on these products and on the engine.

Pour réduire le risque d'explosion, lire ces instructions et celles qui figurent sur la batterie.

GENERAL OPERATION



WARNING Use the Battery Fuel Gauge for a LEAD-ACID (lead acid, sealed lead acid, gel cell and AGM) batteries only.

Utiliser le chargeur pour charger une batterie au plomb uniquement



WARNING Be extra cautious to reduce risk of dropping a metal tool onto battery. It might cause a spark or short-circuit a battery or other electrical part, possibly resulting in an explosion. If damaged, contact PCS (800.742.2740).



CAUTION Never smoke or allow an open spark or flame in the vicinity of the battery or engine.

Ne jamais fumer près de la batterie ou du moteur et éviter toute étincelle ou flamme nue à proximité de ces dernie.



CAUTION Working in the vicinity of a lead-acid battery is dangerous. Batteries generate explosive gases during normal operation. For this reason it is of the utmost importance that prior to each use of your charger, you read and follow the instructions provided exactly.

Il est dangereux de travailler a proximité d'une batterie au plomb. Les batteries produisent des gaz explosifs en service normal. Il est aussi important de toujours relire les instructions avant d'utiliser le chargeur et de les suivre à la lettre.

INSTALLATION:

Below are the simple steps for installing the Battery Fuel Gauge

A Template is provided in order to determine the location of the mounting holes.

Step 1 - After determining the location for the Gauge, drill the necessary holes to allow for installation and feed the wiring to the battery area.

Step 2 - Check the battery pack with a volt meter to determine which two posts provide the entire battery pack voltage.

Step 3 - The cable leading from the battery pack to the Battery Fuel Gauge comes in two parts. Connect the part with the ring terminals to the batteries first.

Step 4 – After confirming that the connections to the battery pack are correct, “mate” that cable with the cable that comes from the gauge using the JST Connector Tab and housing that are already attached to the cables.

Once you connect your PCS Battery Fuel Gauge, the gauge will begin working automatically. State of charge will be displayed by illumination of the Light Emitting Diodes (LEDS) located on the front of the unit.

BATTERY FUEL GAUGE INDICATIONS

When your Battery Fuel Gauge is activated, the battery fuel gauge provides battery pack status information utilizing three red LED indicators, three amber LED indicators and three green LED indicators.



Battery Fuel Gauge Indicators

A total of 9 LED indicators are provided in order to display the state of charge of the battery pack.

The indications are as follows:

| | |
|---------------------------|--|
| 9th LED (amber) | Battery Pack is approximately 100% full |
| 8th LED (amber) | Battery Pack is approximately 90% full |
| 7th LED (amber) | Battery Pack is approximately 78% full |
| 6th LED (amber) | Battery Pack is approximately 67% full |
| 5th LED (amber) | Battery Pack is approximately 55% full |
| 4th LED (amber) | Battery Pack is approximately 45% full |
| 3rd LED (red) | Battery Pack is approximately 33% full |
| 2nd LED (red) | Battery Pack is approximately 20% full |
| 1st LED (red) | Battery Pack is approximately 10% full |
| STANDBY MODE. | The appropriate LED will flash every few seconds when the equipment/vehicle is not in use. |

SPECIAL NOTE: The LED will stay on when the equipment is in use. When the equipment/vehicle is not being used the Battery Fuel Gauge will go to STANDBY MODE and it will flash every few seconds. During charge, the indicator will be Pulse from 1 LED up to the LED that indicates state of charge. This may not always happen when the charger is initially plugged in, but should pulse once the battery pack is at least 50% charged.

FLASHING 10% led(red) This LED will blink when the battery pack voltage reaches a very low level (approx. 1.8 volts per cell). ie- on a 48V battery pack the voltage would be 43.20.

***NOTE-** On the BFG12V models the Low Voltage LED may begin flashing periodically once the battery falls below 32% and the 4th LED is lit. This light will come on more often as the battery is depleted to a lower level.

If the Low Voltage LED comes on often or becomes solid, it is recommended that use of the equipment be stopped immediately to protect electronics that are connected to the battery pack. Recharge batteries as soon as possible.

TROUBLESHOOTING

PROBLEM: The LED indicator illuminated on the Battery Fuel Gauge is flashing every few seconds.

Solution Sequence:

1. This is the STANDBY MODE and is normal when the equipment/vehicle is not in use. The flashing LED is still indicating the condition of the battery pack.
2. Start using the equipment/vehicle and the LED light will stay on.
3. If this is happening during charging, wait until the battery pack is at least 50% charged and the appropriate LED will illuminate and stay on until the charge cycle is complete and then the LED will go to standby mode.

PROBLEM: No LED indicators illuminated on Battery Fuel Gauge.

Solution Sequence:

1. Confirm that wires are connected properly to the battery pack.
2. Check for corrosion on the battery post. Corrosion can cause a bad connection
3. Call technical support for further assistance (800.742.2740).

PROBLEM: After charging the battery pack, the 12th LED does not illuminate, but a lower light does.

Solution Sequence:

1. This is an indication that the battery pack voltage is lower than what PCS would consider a full charge.
2. The equipment may have a small draw on the pack, which would cause the “static voltage” of the pack to be lower than what PCS would consider full. When the equipment is used the starting light will most likely stay on for a longer period of time in this scenario.
2. Call technical support for further assistance (800.742.2740).

PROBLEM: While charging, an LED is just flashing every few seconds.

Solution Sequence:

1. This is an indication that the battery pack voltage is still below 50% charged.
2. Once the battery pack voltage reaches at least 50% and the Battery Fuel Gauge senses that a charge is being applied to the pack, the appropriate light will come on and stay on. This will usually be light number 7 (amber). From that point on the lights will keep going up until the charge cycle is complete.

LIMITED WARRANTY

Pro Charging Systems, LLC (PCS) makes this Limited Warranty only to the original retail purchaser.

PCS warrants this Battery Fuel Gauge for one year from the date of retail purchase against defective materials and/or workmanship. If such defects should occur, this unit will either be repaired or replaced at the discretion of the manufacturer. It is the responsibility of the original purchaser to return the Battery Fuel Gauge along with proof of purchase, transportation, and/or any mailing or handling charges prepaid to the manufacturer or its authorized representative.

This limited warranty is void if the product is misused, improperly maintained, handled carelessly or incorrectly operated. Additionally, this warranty is void if the Battery Fuel Gauge is disassembled, the connecting cables are cut, the connecting plugs are cut off, the Battery Fuel Gauge is altered without authorization from PCS, the serial number is removed, or repair is attempted by anyone other than an authorized representative.

PCS makes no other warranty other than this limited warranty and expressly excludes any implied warranty, including warranty for any incidental or consequential damages.

This is the only expressed limited one year warranty authorized by PCS and does not authorize anyone to assume or make any other obligation towards the product other than this one year Limited Warranty. Some states do not allow limitation of incidental or consequential damages.

This warranty gives you specific legal rights and you may also have other rights which vary from state to state.

Please call Pro Charging Systems, LLC for full warranty information and/or service please call (800.742.2740).



2017 Generator Manual

Attention:

Please read the instructions carefully before using.

The generator set is Gasoline 64/72 Volt DC Generator.

Preface

This manual covers operation and maintenance of the H01034 - 6000 Watt DC generator.

All the information in this publication is based on the latest product information available at the time of approval for printing.

We reserve the right to make changes to this manual at any time without notice and without incurring any obligation.

No part of this publication may be reproduced without written permission.

This manual should be considered a permanent part of the generator and should remain with the vehicle if it is resold.

Pay special attention to statements preceded by the following words:

WARNING: Failure to properly follow these precautions can result in property damage, serious injury or death!

Read all labels and the owner's manual before operating this generator.

Operate only in well ventilated areas. Exhaust gas contains poisonous carbon monoxide, and can be deadly.

Always stop engine before refueling. Wait 5 minutes before restarting.

Check for spilled fuel or leaks. Wait 5 minutes before use.

Keep any sources of ignition away from fuel tank, at all times.

CAUTION: Indicates a possibility of personal injury or equipment damage if instructions are not followed.

NOTE: Helpful information.

If a problem should arise, or if you have any questions about the generator, consult an authorized dealer.

Table of Contents

| | |
|------------------------------|----|
| 1. SAFETY INSTRUCTIONS----- | 3 |
| 2. PRE-OPERATION CHECK----- | 5 |
| 3. STARTING THE ENGINE----- | 7 |
| 4. STOPPING THE ENGINE----- | 10 |
| 5. MAINTENANCE----- | 11 |
| 6. TRANSPORTING/STORAGE----- | 14 |
| 7. TROUBLESHOOTING----- | 15 |
| 8. SPECIFICATIONS----- | 17 |

1. SAFETY INSTRUCTIONS

WARNING

Our generator is designed to give safe and dependable service if operated according to instructions. Read and understand the owner's manual before operating the generator. Failure to do so could result in personal injury or equipment damage.

WARNING

Exhaust gas contains poisonous contents (eg. carbon monoxide).
Never run the generator in an enclosed area.
Be sure to provide adequate ventilation.

WARNING

The muffler becomes very hot during operation and remains hot for a while after stopping the engine. Be careful not to touch the muffler while it is hot. Let the engine cool before storing the generator indoors. The engine exhaust system will be heated during operation and remain hot immediately after stopping the engine.
To prevent injury, pay attention to the warning marks attached to the generator.

CAUTION

Never connect any cable other than the cable provide for parallel operation to the parallel operation socket.
Electric shocks can result if this instruction is not followed.

To ensure safe operation:

WARNING

Gasoline is extremely flammable and explosive under certain conditions. Refuel in a well ventilated area with the engine stopped. Keep away from fire and sparks when refueling the generator. Wipe up spilled gasoline at once.

WARNING

Connections to the *Switchback* electrical system must be made by a qualified technician.

Improper connections can allow electrical current from the generator to back feed into the vehicles batteries. Such back feed may cause damage to the generator or possibly explode, burn, or cause damage to vehicles electrical system.

WARNING

Always make a pre-operation inspection before you start the engine.

You may prevent an accident or equipment damage.

Operate the generator on a level surface. If the generator is tilted, fuel spillage may result.

Know how to shop the generator quickly and understand operation of all the controls. Never permit anyone to operate the generator without reading and understanding the instructions in this manual.

Keep children and pets away from the generator when it is in operation.

Keep away from rotating parts while the generator is running.

The generator is a potential source of electrical shocks when misused. Do not operate with wet hands.

Do not operate the generator in the rain or snow and do not let it get wet.

2. PRE-OPERATION CHECK

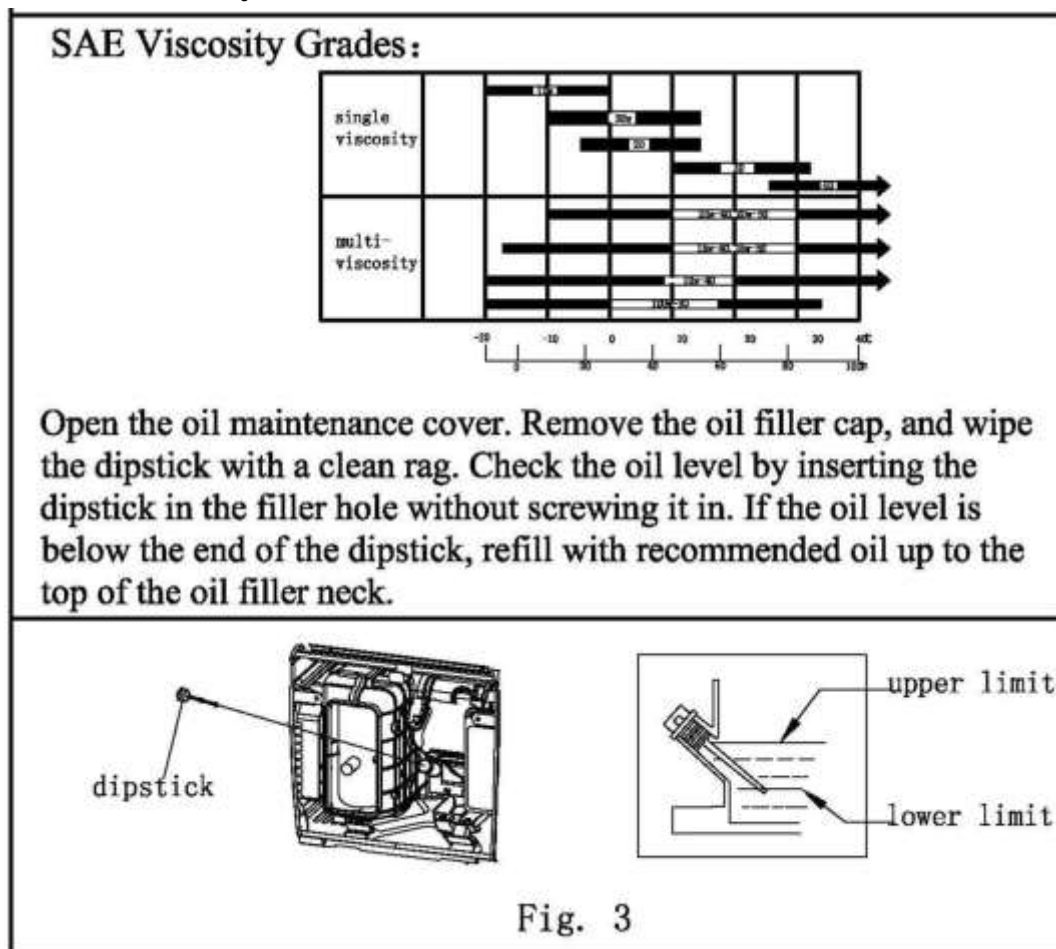
Be sure to check the generator on a level surface with the engine stopped.

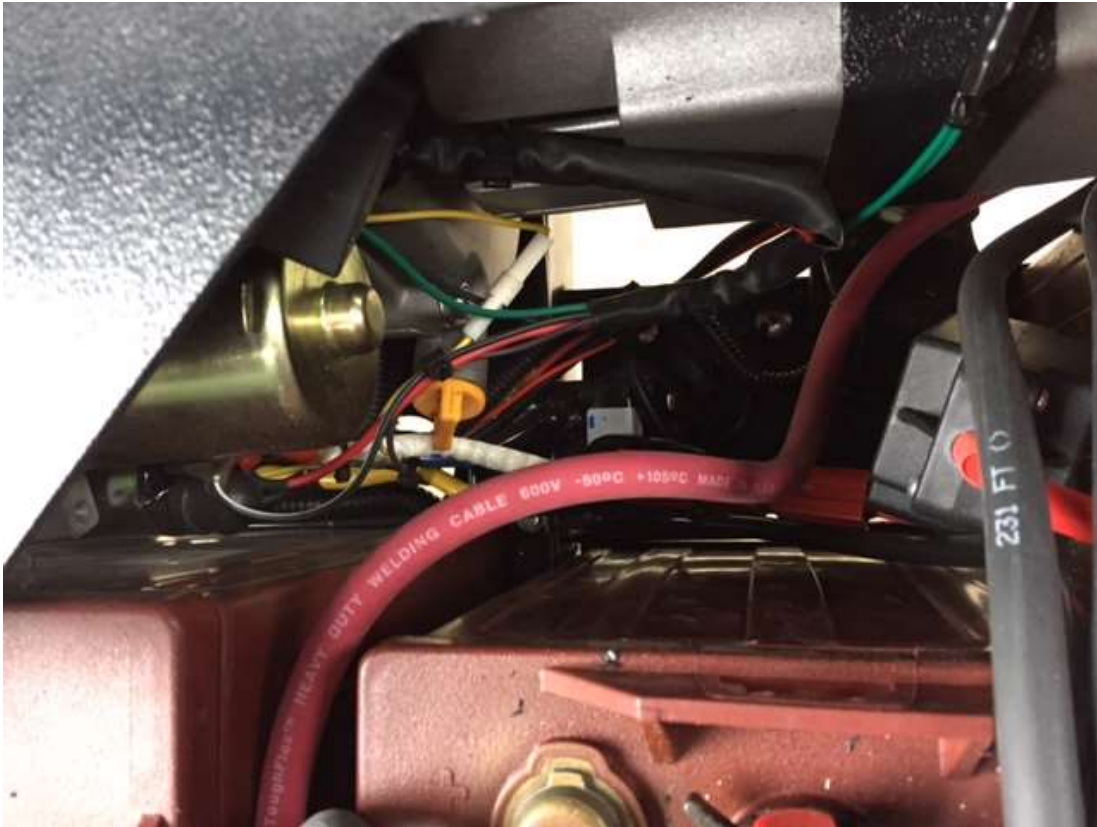
2.1 Check the engine oil level

CAUTION

Using non-detergent oil or 2-stroke engine oil could shorten the engine's service life. Use high-detergent, premium quality 4-stroke engine oil, certified to meet or exceed U.S. automobile manufacturer's requirements for APL Service Classification SG, SF. Select the appropriate viscosity for the average temperature in your area.

SAE Viscosity Grades:





Remove the oil filler cap, and wipe the dipstick with a clean rag. Check the oil level by inserting the dipstick in the filler hole without screwing it in. If the oil level is below the end of the dipstick, refill with recommended oil up to the top of the oil filler neck.

The oil drain is accessible by removing the skid plate located just below it.

There are several types of aftermarket oil removal pumps that can remove the oil from the top.

4. STARTING THE ENGINE

CAUTION

When starting the generator after adding fuel for the first time, after long term storage, or after running out of fuel, turn the fuel valve lever to the “ON” position, then wait for 10 to 20 seconds before starting the engine.

4.1 Turn the fuel valve lever to the ON position, see Fig. 6.



Fig. 6

4.2 Pull the choke out to the CLOSED position

Do not use the choke when the engine is warm or the air temperature is high, see **Fig. 7**.



Fig. 7

4.3 Generator Start – Stop Fig. 8

Push the fuel pump switch to the on position.

Push the start switch, release when the generator engine has running.

Push the fuel pump switch to stop generator.

Warning: The fuel pump switch must be off when the generator is not running.



Fig. 9

5. CHARGING MODE

5. Charging mode. H01034 - 6000 Watt DC generator

- 1.) The generator is designed for charging the batteries when the vehicle is stopped and will automatically adjust output when driving.
- 2) The generator has 3 – 50 amp breakers that are for overload protection. These breakers are located under the front seat on a Switchback and the rear set of the Switchback Crew. If any of these breakers have popped the charging capacity of the generator will be reduced. If this happens turn off the generator and reset the breaker. See Fig 10.



High Altitude Operation:

At high altitude, the standard carburetor air-fuel mixture will be excessively rich. Performance will decrease, and fuel consumption will increase.

High altitude performance can be improved by installing a smaller diameter main fuel jet in the carburetor and readjusting the pilot screws. If you always operate the generator at altitude higher than 1,500m (5,000 feet) above sea level, have your authorized perform these carburetor modifications.

Even with suitable carburetor jetting, engine horsepower will decrease approximately 3.5% for each 305m (1,000 feet) increase in altitude. The effect of altitude on the horsepower will be greater than this if no carburetor modification is made.

CAUTION

Operation of the generator at an altitude lower than the carburetor is jetted for may result in reduced performance, overheating, and serious engine damage caused by an excessively lean air/fuel mixture.

CAUTION

Do not exceed the current limit specified for any one AC receptacle and the DC terminals.

Do not modify or use the generator for other purposes than it is intended for.

Also observe the following when using the generator:

Do not connect generators in parallel.

CAUTION

The operation indicator light (green) will remain on during normal operating conditions.

If the generator is overloaded, the operation indicator light (green) will go off.

6. MAINTENANCE

The purpose of the maintenance and adjustment schedule is to keep the generator in the best operating condition.

WARNING

Shut off the engine before performing any maintenance. If the engine must be run, make sure the area is well-ventilated. The exhaust contains poisonous gases.

CAUTION

Use our genuine parts or the equivalent. The use of replacement parts which are not of equivalent quality may damage the generator.

6.1 Maintenance Schedule:

| REGULAR SERVICE PERIOD (1) Perform at every indicated month or operating hour interval, whichever occurs, first. | | EACH USE | FIRST MONTH OR 20 HRS | EVERY 3 MONTHS OR 50 HRS | EVERY 6 MONTHS OR 100 HRS | EVERY YEAR OR 300HRS |
|---|--------------|--------------|-----------------------|--------------------------|---------------------------|----------------------|
| ITEM | | | | | | |
| Engine oil | Check | | x | | | |
| | Change | | x | | x | |
| Air Cleaner | Check | | x | | | |
| | Clean | | | X(2) | | |
| Spark Plug | Clean-adjust | | | | x | |
| Spark arrester | Clean | | | | x | |
| Fuel sediment cup | Clean | | | | x | |
| Valve clearance | Check-adjust | | | | | x(3) |
| Fuel tank and strainer | Clean | | | | | x(3) |
| Fuel Line | Check | Every | 2 year | (replace if | Necessary) | (3) |

NOTE:

- (1) Log hours of operation to determine proper maintenance.
- (2) Service more frequently when used in dusty areas.
- (3) These items should be serviced by an authorized dealer, unless the owner has the proper tools and is mechanically proficient.

6.2 Changing oil

Drain the oil while the engine is still warm to assure rapid and complete draining.

1. Take out the oil outlet plug.
2. Jack up the rear of the vehicle and place on jack stands or use vehicle ramps.
3. Remove the drain bolt which is accessible under the vehicle by removing skid plate located just below the drain plug and drain the oil. Retighten the bolt securely.
4. Refill with the recommended oil and check the level.
5. Replace the skid plate.

Engine oil capacity: 1.1L or 34OZ

NOTE

Please dispose of used motor oil in a manner that does not damage the environment. We suggest you take it in a sealed container to your local oil disposal center for proper disposal. Do not throw it in the trash or pour it on the ground.

6.3 Air Cleaner Servicing:

A dirty air cleaner will restrict air flow to the carburetor. To prevent carburetor malfunction, service the air cleaner regularly. Service more frequently when operating the generator in extremely dusty areas.

WARNING

Do not use gasoline or low flash point solvents for cleaning. They are flammable and explosive under certain conditions.

NOTE

Never run the generator without the air cleaner. Rapid engine wear may result.

1. Open the air filter cover.
2. Unsnap the clips, remove the air cleaner cover.
3. Sponge element:
Remove the sponge element from the air cleaner cover.
Wash the sponge element in a solution of household detergent in warm water, then rinse thoroughly, or wash in nonflammable or high flash point solvent. Allow the sponge element to dry thoroughly.
Soak the sponge element in clean engine oil and squeeze out the excess oil.
The engine will smoke during initial startup if too much oil is left in the sponge element.
Reinstall the sponge element to the air cleaner cover.
4. Reinstall the air cleaner cover.

6.4 Spark plug service

To ensure proper engine operation, the spark plug must be properly gapped and free of deposits.

1. Open the back maintenance cover.
2. Remove the spark plug cap.
3. Used the wrench to remove the spark plug.
4. Clean any dirt from around the spark plug base.
5. Visually inspect the spark plug. Discard it if the insulator is cracked or chipped. Clean the spark plug with a wire brush if it is to be reused.
6. Measure the plug gap with a feeler gauge.
The gap should be 0.5-0.75mm (0.02-0.03in). Correct as necessary by carefully bending the side electrode.
7. Install the spark plug carefully by hand to avoid cross-threading.
8. After a new spark plug has been seated by hand, it should be tightened $\frac{1}{2}$ turn with a wrench to compress its washer.
If a used plug is being reinstalled, it should only require $\frac{1}{8}$ to $\frac{1}{4}$ turn after being seated.
9. Reinstall the spark plug inspection cover and tighten the cover screw.
10. Close and latch the back maintenance cover.

CAUTION

The spark plug must be securely tightened. An improperly tightened spark plug can become very hot and possibly damage the generator.

Never use a spark plug with an improper heat range.

7. TRANSPORTING/STORAGE

7.1 When transporting the generator, turn the fuel valve lever OFF

7.2 Before storing the unit for an extended period:

1. Be sure the storage area is free of excessive humidity and dust.
2. Add a fuel additive to the fuel
3. Turn on the fuel shut off and run generator until it stops. Make sure and put the start-stop switch in the stop position.

8. TROUBLE SHOOTING

8.1) Low charging from generator.

The generator has 3 - 50amp breakers to protect the generator from over load and damage. The generator will continue to run and charge but at a lower amperage. Located under the front seat driver side on the Switchback and back seat driver side of the Switchback Crew. FIG 10



Switchback Crew

Fig 10

Switchback

8.2) When the engine will not start:

| | | |
|------------------------------------|----|----------------------------|
| Is there fuel in the tank? | NO | Refill the tank. |
| YES | | |
| Is the engine switch on? | NO | Turn the engine switch on. |
| YES | | |
| Is the engine valve on? | NO | Turn the fuel valve on. |
| YES | | |
| Is there enough oil in the engine? | NO | Add the recommended oil. |
| YES | | |

WARNING

Be sure there is no spilled fuel around the spark plug. Spilled fuel may ignite.

Is the fuel reaching the carburetor?

If the engine still does not start, take the generator to an authorized dealer.

To Check:

1. Remove the spark plug cap and clean any dirt from around the spark plug.
2. Remove the spark plug and install the spark plug in the plug cap.
3. Set the plug side electrode on the cylinder head to ground.
4. Crank the engine; sparks should jump across the gap.

To Check:

1. Turn off the fuel valve and loosen the drain screw.
2. Fuel should flow from the drain when the fuel valve is turned on.

9. SPECIFICATIONS

| Generator | |
|-----------------------|---|
| Model Name | HV60ADC |
| Rated DC voltage | 48V/64V/72V |
| Rated DC current | 200A//120/100A |
| output waveform | DC |
| Engine | |
| Engine Model | 188F |
| Engine Type | 4-stroke, OHV, single cylinder, cylinder inclined, air cooled, gasoline |
| Displacement | 389ml - 389CC |
| Rated rev | 3600r/min |
| Ignition system | T.C.I |
| Start system | Recoil hand-operated, electric start |
| Engine rated output | 10.4HP - 7.8KW |
| Fuel tank capacity | 15L - 4 GAL - 9.5 L 2.5 GAL |
| Fuel consumption | ≤ 9 G/H |
| Lube Oil capacity | 37.1OZ - 1.1L |
| Alternator | |
| Alternator | permanent magnetic alternator with DC module, 100% copper, brushless |
| Transient Max current | 220A |
| output efficiency | $\geq 90\%$ |
| Ripple voltage | ≤ 3 mV |
| Dimension(mm) | 22"X18"X14" |
| Net weight | 100LBS |

Ver2016-1

PRO Charging Systems

Safety, Installation and Operating Instructions *Instructions importantes concernant la sécurité*

Manual for the Following Battery Charger Models:

4818OB - 6414OB - 7212OB



 **DeltaVolt®**
Intuitive Charging Technology

 **DUAL PRO®**
Pro Quality Pro Performance

 **DeltaView**
Intuitive Charge History Analysis

Made in the


081215

IMPORTANT NOTICE:

Please save and read these safety, operating and installation instructions before installing or applying AC power to your Pro Charging Systems (PCS) charger. Contact technical support at PCS with any product, installation, or service questions (800.742.2740).

INSTRUCTIONS FOR THE FOLLOWING BATTERY CHARGER MODELS:

| MODEL | AC SUPPLY | DC Output | Battery System | Battery Capacity |
|--------------|---------------------|--------------------|------------------|-------------------------|
| | | | | |
| | | | | |
| | | | | |
| | | | | |
| | | | | |
| | | | | |
| | | | | |
| | | | | |
| | | | | |
| | | | | |
| | | | | |
| | | | | |
| 4818, 4818OB | 120 volts, 60 Hertz | 18 amps @ 48 volts | 48 volt, 24 cell | 150-350 ah(20hr rating) |
| | | | | |
| | | | | |
| 6414OB | 120 volts, 60 Hertz | 14 amps @ 64 volts | 64 volt, 32 cell | 150-350 ah(20hr rating) |
| | | | | |
| | | | | |
| 7212OB | 120 volts, 60 Hertz | 12 amps @ 72 volts | 72 volt, 36 cell | 150-350 ah(20hr rating) |
| | | | | |

TABLE OF CONTENTS

| | |
|------------------------------------|-----------|
| Important Safety Instructions..... | Pages 2-3 |
| Installation and Preparation | Page 4 |
| General Operation | Pages 4-5 |
| Charging Indications..... | Page 6 |
| Troubleshooting | Page 6 |
| LED Fault Code Indications | Page 7 |
| Limited Warranty Information..... | Page 7 |
| Additional Products..... | Page 8 |

IMPORTANT SAFETY INSTRUCTIONS*INSTRUCTIONS IMPORTANTES CONCERNANT LA SÉCURITÉ*

SAVE THESE INSTRUCTIONS. This manual contains important safety and operating instructions for future reference.

CONSERVER CES INSTRUCTIONS. CE MANUEL CONTIENT DES INSTRUCTIONS IMPORTANTES CONCERNANT LA SÉCURITÉ ET LE FONCTIONNEMENT.

Understand and relate the Hazard Levels and Signal Words utilized in this manual with the following definitions:



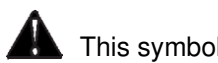
This symbol means: Immediate hazards, which will result in severe personal injury or death.



This symbol means: Hazards or unsafe practices, which could result in severe personal injury or death.



This symbol means: Hazards or unsafe practices, which may result in minor personal injury, product or property damage.



This symbol means BE ALERT! Your safety, or the safety of others, is involved!

PERSONAL SAFETY PRECAUTIONS



Always read all instructions before using your charger!

1. **Wear complete eye protection and clothing protection.** Avoid touching eyes while working near battery. Have plenty of fresh water and soap nearby in case battery acid contacts skin, clothing, eyes, or other surfaces. If battery acid contacts skin or clothing, wash immediately with soap and water. If acid enters eye, immediately flood eye with running cold water for at least 10 minutes and seek medical attention promptly.
2. **Dress properly.** Wear protective, electrically nonconductive clothes and nonskid footwear. Remove personal metal items such as rings, bracelets, necklaces, and watches when working with a lead-acid battery. A lead-acid battery can produce a short-circuit current high enough to weld a ring or the like to metal, causing a severe burn. Wear restrictive hair covering to contain long hair.
3. **Avoid working alone.** Be sure someone is within range of your voice or close enough to come to your aid when you work near a lead-acid battery.
4. **Stay alert.** Watch what you are doing, and use common sense. Do not operate any charger when you are tired.
5. **Keep children away.** Children must never be allowed in the work area. Do not let them handle machines, tools, battery chargers, or extension cords.
6. **Keep work area clean.** Cluttered areas invite injuries.
7. **Observe work area conditions.** NEVER smoke or allow a spark or flame in the vicinity of battery or engine. Don't expose to rain. Keep work area well lit.
8. **Do not overreach.** Keep proper footing and balance at all times. Do not reach over or across electrical cables or frames.
9. **Avoid electrical shock.** To reduce risk of electrical shock, unplug charger from outlet before attempting any maintenance or cleaning.
10. **Do not operate charger with damaged electrical cord or plug.** To reduce risk of damage to the electrical plug and cord, pull by plug rather than by the cord when disconnecting charger. If damaged, replace the electrical cord or plug immediately.
11. **Store idle equipment.** When not in use, store equipment in a dry location to inhibit rust. Always lock up tools and equipment and keep out of reach of children.
12. **Maintain charger with care.** Inspect periodically and, if it has received a sharp blow, been dropped, or otherwise damaged in any way, have it repaired by an authorized technician. Do not disassemble charger; contact PCS technical support when service or repair is required (800.742.2740). Incorrect reassembly may result in risk of electrical shock or fire.
13. **Check for damaged parts.** Before using any battery charger, carefully check any part that appears damaged to determine that it will operate properly and perform its intended function. Check for broken parts and any other condition that may affect proper operation. Any part that is damaged should be properly repaired or replaced by a qualified technician. Do not use the charger if any part does not operate properly.
14. **Replacement parts and accessories.** When maintaining, only use accessories intended for use with this charger. Approved accessories are available from Pro Charging Systems (800.742.2740).

15. **CAUTION:** To reduce the risk of fire, use only on circuits provided with 15 amperes branch circuit protection at 100 VAC and 115 VAC and 10 amperes branch circuit protection at 230 VAC in accordance with the national electrical code, ANSI/NFPA 70

ATTENTION: Pour réduire le risque d'incendie, utilisez uniquement sur les circuits munis d'une protection de circuit 15 ampères de branche à 100 VAC et 115 VAC et protection de circuit 10 ampères de branche à 230 VAC en conformité avec le Code canadien de l'électricité CEC Partie 1

SAVE THESE INSTRUCTIONS!

INSTALLATION AND PREPARATION

Important note: if the PCS charger has a model number containing the letters OB, it not intended to be used as a stationary device.



WARNING To reduce risk of battery explosion, follow these instructions, those published by the battery manufacturer, and by the manufacturer of any equipment that you intend to use in the vicinity of battery. Review all cautionary markings on these products and on the engine.

Pour réduire le risque d'explosion, lire ces instructions et celles qui figurent sur la batterie.

If it is necessary to relocate the battery for charging, first remove the grounded terminal from the battery. Then make sure all accessories are off, so as not to cause battery arcing.



WARNING RISK OF EXPLOSIVE GASES: WORKING IN THE VICINITY OF A LEAD-ACID BATTERY IS DANGEROUS. Batteries generate explosive gases during normal battery operation. For this reason, it is of utmost importance that prior to each use of your charger, you read this manual and follow the instructions exactly.

Il est dangereux de travailler à proximité d'une batterie au plomb. Les batteries produisent des gaz explosifs en service normal. Il est aussi important de toujours relire les instructions avant d'utiliser le chargeur et de les suivre à la lettre.

Do not operate charger in a closed-in area or restrict ventilation in any way.

Ne pas faire fonctionner le chargeur dans un espace close et/ou ne pas gêner la ventilation.

Clean battery terminals. Be careful to keep corrosion from coming into contact with eyes.

Add distilled water to each cell until battery acid reaches level specified by battery manufacturer. This helps purge excessive gas from cells. Do not overfill. For a battery without cell caps, carefully follow manufacturer's recharging instructions. Study all battery manufacturers' specific precautions such as removing or not removing cell caps while charging and recommended rates of charge.

When using an extension cord, make sure:

- that pins on plug of extension cord are the same number, size, and shape as those of the charger's plug;
- that extension cord meets UL (Underwriters Laboratories, Inc.) acceptance;
- that wire size is large enough for AC ampere rating of charger.



CAUTION Always make your extension cord connection on the charger side before connecting to a nearby 120VAC GFCI protected (Ground Fault Circuit Interrupt) outlet. Failure to use a GFCI outlet may result in electrical shock. **Note:** U(Universal) chargers should be connected to a 110, 115 or 230VAC GFCI protected outlet. The DC connection should always be made before connecting or disconnecting the AC side.

Note: Extension cords should be industrial grade/heavy duty UL approved and grounded. Check extension cord before use for damage, bent prongs and cuts. Replace if damaged.

Connect the extension cord to the charger; then proceed to plug the extension cord to the GFCI protected (Ground Fault Circuit Interrupt) outlet.

Always remove the extension cord from the GFCI protected outlet first when charging is completed, followed by unplugging the charger.

GENERAL OPERATION



WARNING Use charger for charging a LEAD-ACID (lead acid, sealed lead acid, gel cell and AGM) battery only. It is not intended to supply power to a low voltage electrical system other than in a starter-motor application. Do not use battery charger for charging dry-cell batteries that are commonly used with home appliances. These batteries may burst, causing personal injury and damage to property.

Utiliser le chargeur pour charger une batterie au plomb uniquement. Ce chargeur n'est pas conçu pour alimenter un réseau électrique très basse tension ni pour charger des piles sèches. Le fait d'utiliser le chargeur des piles sèches pourrait entraîner l'éclatement des piles et causer des blessures ou des dommages.



DO NOT attempt to attach a charger to a battery pack if the output of the charger does not match the battery pack voltage. Example: Model i-3625 is a 36 volt output charger and is only usable on 36 volt battery systems. Charger and battery damage can occur.



Be extra cautious to reduce risk of dropping a metal tool onto battery. It might cause a spark or short-circuit a battery or other electrical part, possibly resulting in an explosion. If damaged, contact PCS (800.742.2740).



NEVER charge a frozen battery.

Ne jamais charger une batterie gelée.

Assure that the area around your charger and batteries is properly ventilated. Connect your extension cord, with no AC Power present, to the battery charger and proceed to plug your extension cord into a 120VAC GFCI protected (Ground Fault Circuit Interrupt) outlet.



Risk of electrical shock! Do not touch uninsulated parts of the battery charger output connector, battery connector, or battery terminals.

Once you plug in your PCS battery charging system, the charge cycle will begin automatically. State of charge will be displayed by illumination of the Light Emitting Diodes (LEDS) on the battery status indicator located on the front of the unit.



DO NOT connect or disconnect the DC output electrical cord to or from the battery receptacle when the charger is on. Arcing and / or burning of the plug and receptacle could result and could cause the batteries to explode. If the charger must be stopped, first disconnect the AC power supply cord from its outlet, then disconnect the charger DC output plug from the battery receptacle.

We recommend that you leave your system plugged in. This will reduce sulfation on the lead plates of the batteries and allow your PCS charging system to keep your batteries fully maintained and ready to perform at their best.



To reduce the risk of fire, use only on circuits provided with 15Amperes Branch Circuit Protection in accordance with the National Electrical Code, ANSI/NFPA 70.



Study all battery manufacturers' specific precautions such as removing or not removing cell caps while charging and recommended rates of charge.

Prendre connaissance des mesures de précaution spécifiées par le fabricant de la batterie, p. ex., vérifier s'il faut enlever les bouchons des cellules lors du chargement de la batterie, et les taux de chargement recommandés.



Never place the charger directly above or below the battery being charged; gases or fluids from the battery will corrode and damage the charger. Locate the charger as far away from the battery as DC cables permit.

Ne jamais placer le chargeur directement sous la batterie à charger ou au-dessus de cette dernière. Les gaz ou les fluides qui s'échappent de la batterie peuvent entraîner la corrosion du chargeur ou l'endommager. Placer le chargeur aussi loin de la batterie que les câbles c.c. le permettent.



If it is necessary to remove battery from vehicle to charge it, always remove grounded terminal from battery first. Make sure all accessories in the vehicle are off in order to prevent an arc.

S'il est nécessaire de retirer la batterie du véhicule pour la charger, toujours d'abord débrancher la borne de mise à la masse en premier. S'assurer que le courant aux accessoires du véhicule est coupé afin d'éviter la formation d'un arc.



Never smoke or allow an open spark or flame in the vicinity of the BATTERY the battery or engine.

Ne jamais fumer près de la batterie ou du moteur et éviter toute étincelle ou flamme nue à proximité de ces derniers.

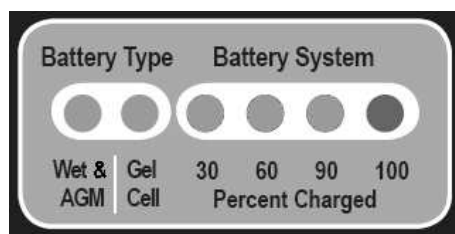


Working in the vicinity of a lead-acid battery is dangerous. Batteries generate explosive gases during normal operation. For this reason it is of the utmost importance that prior to each use of your charger, you read and follow the instructions provided exactly.

Il est dangereux de travailler a proximité d'une batterie au plomb. Les batteries produisent des gaz explosifs en service normal. Il est aussi important de toujours relire les instructions avant d'utiliser le chargeur et de les suivre à la lettre.

CHARGING INDICATIONS

When your battery charging system is activated, the battery status indicator provides charging information utilizing five red LED indicators and one green LED indicator.



Battery Type Indicators

Two amber LED indicators are provided in order to display what type of battery the charger has been programmed to charge. **NOTE:** For information on reconfiguring the battery type, please contact technical support (800.742.2740).

Battery System Percent Charged Indicators

Four LED indicators are provided in order to display the progress of the charge cycle in percentage of charge.

Indications are as follows:

| | |
|---|--|
| 1 ST Amber LED | Illuminated configured for Wet Cell and AGM* batteries |
| 2 ND Amber LED | Illuminated configured for Gel Cell batteries |
| 1 ST RED / 100% GREEN alternate. . . . | Charger plugged into A/C not connected to battery and sending DeltaView signal |
| 1 ST RED LED | Charging - Initial Charging Up To 30% |
| 2 ND & 3 RD RED LEDS | Charging - 60% Complete |
| 1 ST , 2 ND & 3 RD RED LEDS. | Charging - 90% Complete |
| BLINKING GREEN LED | Finishing Stage (Note: Battery Type Indicator will also blink during this stage) |
| STEADY GREEN LED | Charge Complete –Float/Maintenance Mode-On for 5 minutes and off for 60 minutes |

***We normally recommend our STANDARD Delta Volt profile for AGM Batteries. There are some cases where particular AGM batteries are manufactured to different specifications and may need a special profile with a much lower finish voltage limitation. In these cases we will do our best to accommodate your unique need.**

The green LED is illuminated whenever the charge cycle has terminated and the internal circuitry has determined the batteries to be fully charged. The green LED will blink during the finishing stage of the charge cycle. After the completion of the charge cycle, the green LED will remain on steady during the float-maintenance stage. **During this final stage current is only flowing to the battery system for 5 minutes and then current will stop completely for 60 minutes.**

Your system provides an equalization stage every 30 days while plugged in. If the charger is normally disconnected from A/C after completing charge, equalization can be accomplished by plugging back into A/C whenever this stage is desired. Battery manufacturers recommend that equalization is done once a month in order to further reduce sulfation on the lead plates of a battery, which helps promote longer battery life. Note: During this process the LEDs will go through their normal routine(Red LEDs counting up for % of charge along with the illuminated Red LED Battery Type) and then the Green LED and Red Battery Type LED will blink) until the unit returns to the maintenance mode and a steady Green LED and steady Red Battery Type LED. (Not applicable to Gel Profile)

TROUBLESHOOTING

PROBLEM: No LED indicators illuminated on battery status indicator.

Solution Sequence:

1. Confirm that current is being delivered to the charger. Use a meter or test light to check the AC power supply from its source through all connecting points up to the charger.
2. Check that the AC circuit breaker (on front of the unit) is depressed.
3. Call technical support for further assistance (800.742.2740).

PROBLEM: The charge status indicator changes rapidly back and forth from red to green or the green LED will not illuminate after excessive charging time (24 hours or more).

Solution Sequence:

1. Disconnect AC power from the charging system. This indication may signify a possible battery problem.
2. Call technical support for further assistance (800.742.2740).

PROBLEM: A green LED was illuminated before disconnecting the power from the charger, but upon reconnection, red LEDs appear and remain on.

This is the normal operating procedure for the system. It indicates that a reanalysis of the battery status was initiated and after a series of steps the green LED will illuminate.

LIGHT EMITTING DIODES (LED) FAULT CODE INDICATIONS

The microprocessor is constantly monitoring the charger circuitry and will both detect and display blinking LED indications if a fault is detected. The battery type LED will be **OFF** during a fault code condition.

30% RED LED BLINKINGNO BATTERY DETECTED

This indication occurs whenever the charger circuitry cannot detect a battery. The charger circuitry will not allow charge current to flow under this condition. With the AC power supply cord unplugged, check the connection to the batteries for proper polarity (black wire to negative or -). Also check for corrosion free secure connections to the battery.

30 & 60% RED LEDS BLINKINGFORMING STAGE TIMEOUT SHUTDOWN

This indication occurs if the battery voltage has not risen above 1.75 volts per cell within the first 3 hours of charging. This indicates that a possible battery problem exists and that the charge cycle has been terminated at this point.

30, 60 & 90% RED LEDS BLINKING.....OVERALL TIMER SHUTDOWN

This indication occurs if the charger has not completed the charge cycle within the allowable factory set time period. This indicates that a possible battery problem exists and that the charge cycle has been terminated at this point.

30 & 90% RED LEDS BLINKINGINTERNAL OVERTEMP SHUTDOWN

This indication occurs if the charger circuitry has detected operating temperatures inside the charger enclosure that are above factory specified levels. This could indicate that a possible charger problem exists and that the charge cycle has been terminated.

30% RED & 100% GREEN LEDS BLINKING BULK STAGE SHUTDOWN

This indication occurs if the battery voltage does not rise properly during the Bulk Stage. This indicates that a possible battery problem exists and that the charge cycle has been terminated at this point. Please call technical support for further assistance (800.742.2740).

30% RED & 100% GREEN LEDS ALTERNATE BLINKING ON OFF.....DELTAVIEW SIGNAL OR NO BATTERY DETECTED

This will be the NORMAL indication when the charger is plugged into A/C but not connected to a battery pack, allowing the DeltaView signal to be retrieved with a DeltaView Reader. This can also be considered the NO BATTERY DETECTED fault code. Please call technical support for further assistance (800.742.2740).

Note: Disconnecting and reconnecting the AC power supply cord will reset the charger.

LIMITED WARRANTY

Pro Charging Systems, LLC (PCS) makes this Limited Warranty only to the original retail purchaser.

PCS warrants this battery charger for three years (unless the charger is used in a Restricted Market) from the date of retail purchase against defective materials and/or workmanship. Restricted markets include markets outside of the USA, Rental applications and Heavy Industrial applications. Sometimes RM is designated in the PCS Part number when ordered, but is not part of the model number. Chargers used in Restricted Markets will have a warranty period of 18 months from the date of retail purchase against defective materials and/or workmanship. CR refers to "Certified Reconditioned" and designates a 1 year warranty.

If such defects should occur, this unit will either be repaired or replaced at the discretion of the manufacturer. It is the responsibility of the original purchaser to return the charger along with proof of purchase, transportation, and/or any mailing or handling charges prepaid to the manufacturer or its authorized representative. Chargers that are purchased more than two years beyond the date of production will automatically have a warranty start date that will be the two year anniversary of the production date.

This limited warranty is void if the product is misused, improperly maintained, handled carelessly or incorrectly operated. Additionally, this warranty is void if the charger is disassembled, the charger's charge cables are cut, the power cord is cut off, the charger is altered without authorization from PCS, the serial number is removed, or repair is attempted by anyone other than an authorized representative. PCS makes no other warranty other than this limited warranty and expressly excludes any implied warranty, including warranty for any incidental or consequential damages. This is the only expressed limited three year warranty authorized by PCS and does not authorize anyone to assume or make any other obligation towards the product other than this three year Limited Warranty. Some states do not allow limitation of incidental or consequential damages.

This warranty gives you specific legal rights and you may also have other rights which vary from state to state. Please call Pro Charging Systems, LLC for full warranty information and/or service please call (800.742.2740).